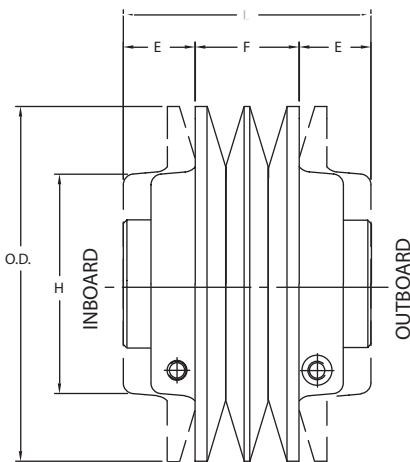
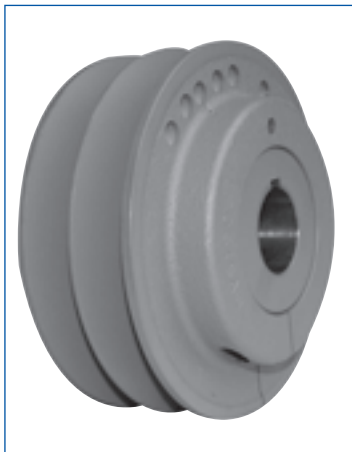
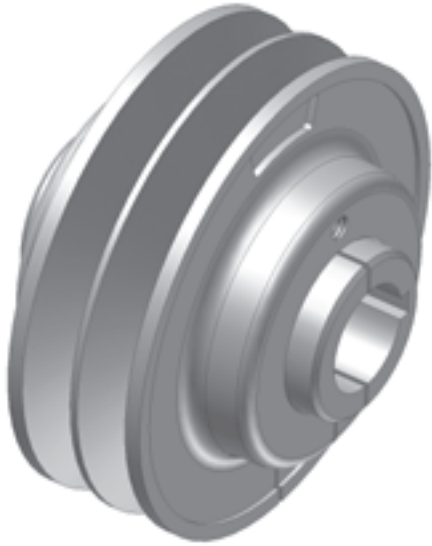


# MVS



SHEAVES

## DID YOU KNOW THAT...

- Designed for up to 40 HP @ 1750 RPM
- Used with A, B, 3V & 5V belts

## IMPORTANT REMINDER



- Every turn of the adjustment screw moves the flange by 1/16".

## HOW TO ORDER

EXAMPLE: **MVS150X1-3/8**

**MVS150**

**X1-3/8**

**MVS150:** ADJUSTABLE PITCH SHEAVE SIZE  
Last three digits represent the outside diameter in MM. 150 MM = 5.905"

**X1-3/8:** BORE SIZE (1 3/8")  
**Bore size:** Inch bore sizes are designated with the whole inch followed by the fraction. For example, a 1.5" diameter bore would be 1-1/2.

## Pulley Adjustment

Modify the sheave pitch diameter by using the adjustment screw. Every turn of the adjustment screw moves the flanges by 1/16". Once the required diameter is obtained, tighten the locking screw.

**DIMENSIONS**

Part No.	List Price \$	O.D.	Dimensions						Stock Bores Marked "X"					WT (lbs)
			F		E		L	H	1 1/8	1 3/8	1 5/8	1 7/8	2 1/8	
			Min.	Max.	Min.	Max.								
MVS130	228.00	5.118	1.73	2.27	0.75	1.02	3.77	3.15	X	X	-	-	-	8.5
MVS150	250.00	5.905	1.73	2.59	0.77	1.20	4.13	3.62	X	X	X	-	-	12.1
MVS170	272.00	6.692	1.73	2.59	0.77	1.20	4.13	3.62	X	X	X	-	-	14.8
MVS190	294.00	7.480	1.73	2.59	0.77	1.20	4.13	5.12	-	X	X	X	-	23.2
MVS210	316.00	8.268	1.73	2.59	0.77	1.20	4.13	5.12	-	X	X	X	X	27.0
MVS230	338.00	9.055	1.73	2.59	0.77	1.20	4.13	5.12	-	X	X	X	X	30.40

**DATUM DIAMETERS**

	Part No.	Datum Diameter, Inches									
		Min.	Max.	0 Turn Close	1 Turn Open	2 Turns Open	3 Turns Open	4 Turns Open	5 Turns Open	6 Turns Open	7 Turns Open
<b>A Belt</b>	MVS130	3.45	4.47	4.47	4.26	4.06	3.85	3.65	3.45	-	-
	MVS150	4.23	5.25	5.25	5.05	4.85	4.64	4.44	4.23	-	-
	MVS170	4.81	6.04	6.04	5.84	5.63	5.43	5.22	5.02	4.81	-
	MVS190	5.60	6.83	6.83	6.62	6.42	6.21	6.01	5.81	5.60	-
	MVS210	6.40	7.63	7.63	7.43	7.22	7.02	6.81	6.61	6.40	-
	MVS230	7.19	8.42	8.42	8.21	8.01	7.81	7.60	7.40	7.19	-
<b>B Belt</b>	MVS130	3.63	4.86	4.86	4.65	4.45	4.24	4.04	3.84	3.63	-
	MVS150	4.21	5.65	5.65	5.44	5.24	5.03	4.83	4.62	4.42	4.21
	MVS170	5.00	6.43	6.43	6.23	6.02	5.82	5.61	5.41	5.21	5.00
	MVS190	5.79	7.22	7.22	7.01	6.81	6.60	6.40	6.20	5.99	5.79
	MVS210	6.59	8.02	8.02	7.82	7.61	7.41	7.20	7.00	6.80	6.59
	MVS230	7.38	8.81	8.81	8.61	8.40	8.20	7.99	7.79	7.58	7.38
<b>3V Belt</b>	MVS130	3.56	4.17	4.17	3.97	3.77	3.56	-	-	-	-
	MVS150	4.35	4.96	4.96	4.76	4.55	4.35	-	-	-	-
	MVS170	5.13	5.75	5.75	5.54	5.34	5.13	-	-	-	-
	MVS190	5.92	6.53	6.53	6.33	6.13	5.92	-	-	-	-
	MVS210	6.73	7.34	7.34	7.13	6.93	6.73	-	-	-	-
	MVS230	7.51	8.13	8.13	7.92	7.72	7.51	-	-	-	-
<b>5V Belt</b>	MVS130	-	-	-	-	-	-	-	-	-	-
	MVS150*	4.31	5.74	5.74	5.54	5.33	5.13	4.93	4.72	4.52	4.31
	MVS170*	5.10	6.53	6.53	6.33	6.12	5.92	5.71	5.51	5.30	5.10
	MVS190	5.88	7.32	7.32	7.11	6.91	6.70	6.50	6.29	6.09	5.88
	MVS210	6.69	8.12	8.12	7.92	7.71	7.51	7.30	7.10	6.89	6.69
	MVS230	7.48	8.91	8.91	8.70	8.50	8.29	8.09	7.89	7.68	7.48

\* IMPORTANT: Recommended for use with narrow cog belts only.

P.D. for "A" belt = Datum Dia. "A" belt + .25

P.D. for "3V" belts = Datum Dia. "3V" belts + .05

P.D. for "B" belt = Datum Dia. "B" belt + .35

P.D. for "5V" belts = Datum Dia. "5V" belts + .10

SHEAVES