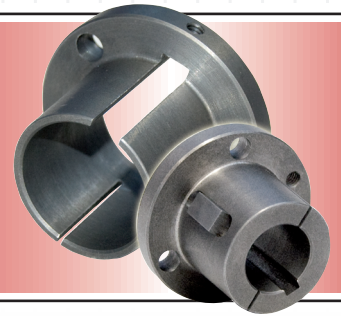
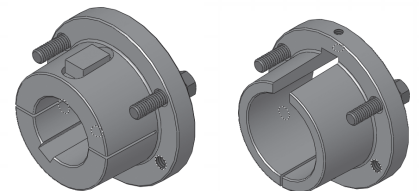


Baldor Now Offers

BK² Bushings

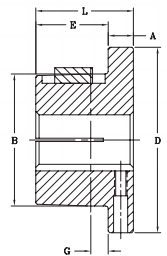
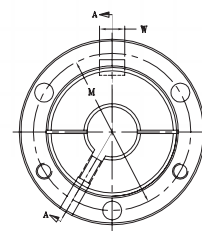


- Keyed on shaft and hub to reduce shock on the cap screws.
- Mostly used for applications with frequent stop and start or reverse needs.
- The taper on all BK2 Bushings is 3/4" per foot on diameter.
- Type 1 manufactured in cast or ductile iron, type 2 manufactured in ductile iron only.
- 100% interchangeable with licensed manufacturer's products.
- BK2 Bushing is the most preferred style for fan blades assembly.
- Helps during blind installation.



Type 1

Type 2



Part #	List Price	Mult. Sym.	Dimensions										Bore range		Cap Screws		Av. Wt. Lbs.	Wrench torque In-Lbs.
			L	A	E	B		D	M	W	G	Type 1	Type 2	No.	Size			
						Larg End	Small End											
G	10.30	STB29	1	1/4	3/4	1.172	1.133	2	1 9/16	-	3/16	3/8 - 15/16	1	2	1/4 X 5/8	.5	95	
P1	17.90	STB29	1 15/16	13/32	1 17/32	1.9375	1.8555	3	2 7/16	3/8	7/32	1/2 - 1 7/16	1 1/2 - 1 3/4	3	5/16 X 1	1.3	192	
P2	19.60	STB29	2 15/16	13/32	2 17/32	1.9375	1.7930	3	2 7/16	3/8	7/32	3/4 - 1 7/16	1 1/2 - 1 3/4	3	5/16 X 1	1.5	192	
B	17.90	STB29	1 15/16	1/2	1 7/16	2.625	2.5567	3 11/16	3 1/8	1/2	7/32	1/2 - 1 15/16	2 - 2 7/16	3	5/16 X 1 1/4	1.8	192	
Q1	35.20	STB29	2 1/2	17/32	1 31/32	2.875	2.7657	4 1/8	3 3/8	1/2	7/32	3/4 - 2 1/16	2 1/8 - 2 11/16	3	3/8 X 1 1/4	3.5	348	
Q2	38.50	STB29	3 1/2	17/32	2 31/32	2.875	2.7032	4 1/8	3 3/8	1/2	7/32	1 - 2 1/16	2 1/8 - 2 5/8	3	3/8 X 1 1/4	4.5	348	
R1	87.00	STB29	2 7/8	5/8	2 1/4	4.000	3.8750	5 3/8	4 5/8	3/4	1/4	1 1/8 - 2 13/16	2 7/8 - 3 3/4	3	3/8 X 1 3/4	7.5	348	
R2	98.00	STB29	4 7/8	5/8	4 1/4	4.000	3.7500	5 3/8	4 5/8	3/4	1/4	1 3/8 - 2 13/16	2 7/8 - 3 5/8	3	3/8 X 1 3/4	11	348	
S1	173.00	STB29	4 3/8	3/4	3 5/8	4.625	4.4180	6 3/8	5 3/8	3/4	5/16	1 11/16 - 3 3/16	3 1/4 - 4 1/4	3	1/2 X 2 1/4	13.5	840	
S2	217.00	STB29	6 3/4	3/4	6	4.625	4.2696	6 3/8	5 3/8	3/4	5/16	1 7/8 - 3 3/16	3 1/4 - 4 3/16	3	1/2 X 2 1/4	19	840	
U0*	379.00	STB29	5 1/4	1 1/16	4 3/16	6.000	5.7656	8 3/8	7	1 1/4	7/16	2 3/8 - 3 1/16	-	3	5/8 X 2 3/4	30	1680	
U0*	379.00	STB29	4 15/16	3/4	4 3/16	6.000	5.7656	8 3/8	7	1 1/4	7/16	3 1/4 - 4 1/4	4 3/8 - 5 1/2	3	5/8 X 2 3/4	27	1680	
U1*	650.00	STB29	7 1/8	1 1/16	6 1/16	6.000	5.6485	8 3/8	7	1 1/4	7/16	2 3/8 - 4 1/4	4 3/8 - 5 1/2	3	5/8 X 2 3/4	40	1680	
W1*	1518.00	STB29	8 1/4	1 7/16	6 13/16	8.500	8.1016	12 1/2	10	1 1/4	7/16	3 3/8 - 6 3/16	6 1/4 - 7 7/16	4	3/4 X 3	104	3000	

*Please contact Baldor-Maska for lead time and availability

Bushing	Standard Bores	Keyseat
G	3/8 - 7/16	none
	1/2 - 9/16	1/8 X 7/16
	5/8 - 11/16 - 3/4 - 13/16 - 7/8	3/16 X 3/32
	15/16 - 1	1/4 X 1/8
P1	1/2 - 9/16	1/8 X 1/16
	5/8 - 21/32 - 11/16 - 3/4 - 25/32 - 13/16 - 7/8 -	3/16 X 3/32
	15/16 - 31/32 - 1 - 1 1/16 - 1 1/8 - 1 3/16 - 1 1/4	1/4 X 1/8
	1 5/16 - 1 3/8	5/16 X 5/32
P2	1 3/8 - 1 7/16 - 1 1/2 - 1 9/16 - 1 5/8 - 1 11/16 - 1 3/4	3/8 X 3/16
	3/4 - 13/16 - 7/8	3/16 X 3/32
	15/16 - 1 - 1 1/16 - 1 1/8 - 1 3/16 - 1 1/4	1/4 X 1/8
	1 5/16 - 1 3/8	5/16 X 5/32
B	1 3/8 - 1 7/16 - 1 1/2 - 1 9/16 - 1 5/8 - 1 11/16 1 3/4	3/8 X 3/16
	1 13/16 - 1 7/8 - 1 15/16 - 2 - 2 1/16 - 2 1/8 - 2 3/16 - 2 1/4	1/2 X 1/4
	2 5/16 - 2 3/8 - 2 7/16	5/8 X 5/16
	1/2 - 9/16	1/8 X 7/16
	5/8 - 11/16 - 3/4 - 13/16 - 7/8	3/16 X 3/32
	15/16 - 1 - 1 1/16 - 1 1/8 - 1 3/16 - 1 1/4	1/4 X 1/8
Q1	1 5/16 - 1 3/8	5/16 X 5/32
	1 3/8 - 1 7/16 - 1 1/2 - 1 9/16 - 1 5/8 - 1 11/16 1 3/4	3/8 X 3/16
	1 13/16 - 1 7/8 - 1 15/16 - 2 - 2 1/16 - 2 1/8 - 2 3/16 - 2 1/4	1/2 X 1/4
	2 5/16 - 2 3/8 - 2 7/16 - 2 1/2 - 2 9/16 - 2 5/8 - 2 11/16	5/8 X 5/16
	3/4 - 13/16 - 7/8	3/16 X 3/32
Q2	1 - 1 1/16 - 1 1/8 - 1 3/16 - 1 1/4	1/4 X 1/8
	1 5/16 - 1 3/8	5/16 X 5/32
	1 3/8 - 1 7/16 - 1 1/2 - 1 9/16 - 1 5/8 - 1 11/16 1 3/4	3/8 X 3/16
	1 13/16 - 1 7/8 - 1 15/16 - 2 - 2 1/16 - 2 1/8 - 2 3/16 - 2 1/4	1/2 X 1/4
R1	2 5/16 - 2 3/8 - 2 7/16 - 2 1/2 - 2 9/16 - 2 5/8	5/8 X 5/16
	1 1/8 - 1 3/16 - 1 1/4	1/4 X 1/8
	1 5/16 - 1 3/8	5/16 X 5/32
	1 3/8 - 1 7/16 - 1 1/2 - 1 9/16 - 1 5/8 - 1 11/16 - 1 3/4	3/8 X 3/16
	1 13/16 - 1 7/8 - 1 15/16 - 2 - 2 1/16 - 2 1/8 - 2 3/16 - 2 1/4	1/2 X 1/4
	2 5/16 - 2 3/8 - 2 7/16 - 2 1/2 - 2 9/16 - 2 5/8 - 2 11/16 - 2 3/4	5/8 X 5/16
R2	2 13/16 - 2 7/8 - 2 15/16 - 3 - 3 1/8 - 3 3/16 - 3 1/4	3/4 X 3/8
	3 3/8 - 3 7/16 - 3 1/2 - 3 5/8 - 3 11/16 - 3 3/4	7/8 X 7/16
	1 3/8	5/16 X 5/32
	1 3/8 - 1 7/16 - 1 1/2 - 1 9/16 - 1 5/8 - 1 11/16 - 1 3/4	3/8 X 3/16
	1 13/16 - 1 7/8 - 1 15/16 - 2 - 2 1/16 - 2 1/8 - 2 3/16 - 2 1/4	1/2 X 1/4
S1	2 5/16 - 2 3/8 - 2 7/16 - 2 1/2 - 2 9/16 - 2 5/8 - 2 11/16 - 2 3/4	5/8 X 5/16
	2 7/8 - 2 15/16 - 3 - 3 1/8 - 3 3/16 - 3 1/4	3/4 X 3/8
	3 3/8 - 3 7/16 - 3 1/2 - 3 5/8 - 3 11/16 - 3 3/4	7/8 X 7/16
	3 7/8 - 3 15/16 - 4 - 4 1/8 - 4 3/16 - 4 1/4	1 X 1/2
	1 7/8 - 1 15/16 - 2 - 2 1/8 - 2 3/16 - 2 1/4	1/2 X 1/4
S2	2 5/16 - 2 3/8 - 2 7/16 - 2 1/2 - 2 9/16 - 2 5/8 - 2 11/16 - 2 3/4	5/8 X 5/16
	2 7/8 - 2 15/16 - 3 - 3 1/8 - 3 3/16 - 3 1/4	3/4 X 3/8
	3 3/8 - 3 7/16 - 3 1/2 - 3 5/8 - 3 11/16 - 3 3/4	7/8 X 7/16
	3 7/8 - 3 15/16 - 4 - 4 1/8 - 4 3/16	1 X 1/2
U0*	2 3/8 - 2 7/16 - 2 1/2 - 2 9/16 - 2 5/8 - 2 11/16 - 2 3/4	5/8 X 5/16
	2 7/8 - 2 15/16 - 3 - 3 1/8 - 3 3/16 - 3 1/4	3/4 X 3/8
	3 3/8 - 3 7/16 - 3 1/2 - 3 5/8 - 3 11/16 - 3 3/4	7/8 X 7/16
	3 7/8 - 3 15/16 - 4 - 4 1/8 - 4 3/16 - 4 1/4 - 4 3/8 - 4 7/16 - 4 1/2	1 X 1/2
W1*	4 5/8 - 4 11/16 - 4 3/4 - 4 7/8 - 4 15/16 - 5 - 5 1/8 - 6 3/16 - 5 1/4 - 5 3/8 - 5 7/16 - 5 1/2	1 1/4 X 5/8
	3 3/8 - 3 7/16 - 3 1/2 - 3 5/8 - 3 11/16 - 3 3/4	7/8 X 7/16
	3 7/8 - 3 15/16 - 4 - 4 1/8 - 4 3/16 - 4 1/4 - 4 3/8 - 4 7/16 - 4 1/2	1 X 1/2
	4 5/8 - 4 3/4 - 4 7/8 - 4 15/16 - 5 - 5 1/8 - 6 3/16 - 5 1/4 - 5 3/8 - 5 7/16 - 5 1/2	1 1/4 X 5/8
	5 5/8 - 5 3/4 - 5 7/8 - 5 15/16 - 6 - 6 1/8 - 6 3/16 - 6 1/4 - 6 3/8 - 6 7/16 - 6 1/2	1 1/2 X 3/4
	6 5/8 - 6 3/4 - 6 7/8 - 6 15/16 - 7 - 7 1/8 - 7 3/16 - 7 1/4 - 7 3/8 - 7 7/16	1 3/4 X 3/4

*Please contact Baldor-Maska for lead time and availability

BALDOR

A MEMBER OF THE ABB GROUP

Baldor Electric Company

P.O. Box 2400 • Fort Smith, AR 72902-2400 U.S.A.

Phone (479) 646-4711 • Fax (479) 648-5792 • International Fax (479) 648-5895

www.baldor.com • www.maskapulleys.com