

ANGOSTAS 3V, 5V & 8V



- 1 Para ver las instrucciones de montaje con bujes QD, ver la página 11.
- 2 Todos los cuadros: Se indica el tipo de construcción de la polea en la columna marcada <<T>>. El número se refiere al dibujo y la letra de la siguiente manera: A = radios (brazos); B = sólida; W = alma
- 3 La columna "B" indica el tamaño del buje correspondiente que se requiere.
- 4 Todas las dimensiones están a la fracción más cercana.

SABÍA USTED QUE ...

- Línea completa en inventario, que incluye los modelos más grandes
- Un HP más alto que el modelo clásico, para transmisiones compactas de bajo peso
- Diseñadas para usar con el buje QD
- Modelo 3V desde 1-6;8;10 ranuras, 2,2"-33,5" O.D.
- Modelo 5V desde 2-6;8;10 ranuras, 4,4"-50" O.D.
- Modelo 8V desde 4-6;8;10;12 ranuras, 12,5"- 71" O.D.

CÓMO PEDIR

EJEMPLO: 5-5V11.3

5

5V

11.3

5: NÚMERO DE RANURAS

5V: SECCIÓN DE LA POLEA ("5V")

11.3: DIÁMETRO EXTERIOR ("O.D.") (11.3")

RECUERDO IMPORTANTE



• **NO DEBE USARSE** estas poleas de hierro fundido gris con velocidades tangenciales en exceso de 6500 pies por minuto. Note que las RPM máximas indicadas en la polea se basan en el límite de 6500 pies/min. Esto no toma en consideración la necesidad del balanceo dinámico (en dos planos). Favor referirse al cuadro en la página 32 para verificar la validez del balanceo dinámico en su aplicación.

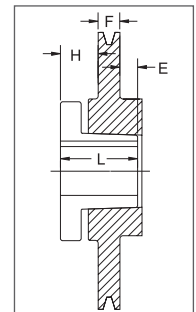
Todos los productos PT funcionales cuando se usan en una transmisión son potencialmente peligrosos y deben ser protegidos por el usuario según las leyes, regulaciones y estándares aplicables, así como la buena práctica de seguridad. (Referirse al Estándar ANSI B15.1)

- Cuando se solicita el balanceo dinámico de una polea, debe especificar la velocidad de operación de la polea. Maska recomienda pedir el buje apropiado con la polea para asegurar un grado de balanceo del 6.3. Si no se ordena el buje al mismo tiempo, el cliente recibirá una renuncia de Maska que libera a Maska de cualquier problema posible de vibración relacionado con la transmisión.

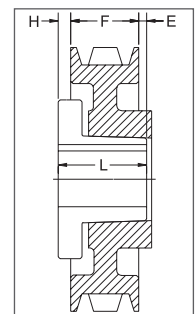
SECCIÓN 3V

DIMENSIONES 1 RANURA

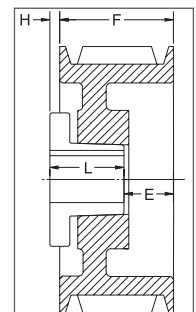
O.D.	Dia. Datum	No. de parte	Precio de lista \$	F = 11/16 hasta un O.D. de 10,60 y 13/16 pulgada después de eso					
				H	Tipo	B	L	E	Peso
2.20	2.15	1-3V2.20^{1*}	20.00	1 1/64	10B	JA	1	45/64	0.8
2.35	2.30	1-3V2.35^{1*}	20.80	1 1/64	10B	JA	1	45/64	0.85
2.50	2.45	1-3V2.50^{1*}	21.60	1 1/64	10B	JA	1	45/64	0.92
2.65	2.60	1-3V2.65	22.40	29/64	6B	JA	1	9/64	0.5
2.80	2.75	1-3V2.80	23.20	29/64	6B	JA	1	9/64	0.7
3.00	2.95	1-3V3.00	24.00	29/64	6B	JA	1	9/64	0.7
3.15	3.10	1-3V3.15	25.20	29/64	6B	JA	1	9/64	0.7
3.35	3.30	1-3V3.35	26.40	29/64	6B	JA	1	9/64	1.1
3.65	3.60	1-3V3.65	27.60	5/8	11B	SH	1 1/4	1/16	1.3
4.12	4.07	1-3V4.12	28.80	5/8	11B	SH	1 1/4	1/16	1.8
4.50	4.45	1-3V4.50	30.00	5/8	11B	SH	1 1/4	1/16	2.2
4.75	4.70	1-3V4.75	32.00	5/8	11B	SH	1 1/4	1/16	2.2
5.00	4.95	1-3V5.00	34.00	5/8	11B	SH	1 1/4	1/16	2.9
5.30	5.25	1-3V5.30	36.00	5/8	11B	SH	1 1/4	1/16	3.3
5.60	5.55	1-3V5.60	38.00	5/8	11B	SH	1 1/4	1/16	3.7
6.00	5.95	1-3V6.00	40.00	5/8	11W	SH	1 1/4	1/16	3.9
6.50	6.45	1-3V6.50	44.00	5/8	11W	SH	1 1/4	1/16	4.9
6.90	6.85	1-3V6.90	52.00	5/8	11W	SH	1 1/4	1/16	5.5
8.00	7.95	1-3V8.00	60.00	11/16	11A	SDS	1 5/16	1/16	5.1
10.60	10.55	1-3V10.60	100.00	11/16	11A	SDS	1 5/16	1/16	8.6
14.00	13.95	1-3V14.00	120.00	13/16	5A	SK	1 7/8	1/4	15.3
19.00	18.95	1-3V19.00	200.00	29/32	3A	SK	1 7/8	5/32	18.3



Tipo 3



Tipo 5

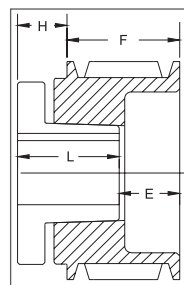


Tipo 6

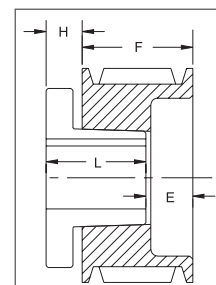
P.D. para correas "3V" = O.D.

¹ Montaje inverso únicamente.

* Tornillos para montaje suministrados por Maska con esta polea.



Tipo 10



Tipo 11

SECCIÓN 3V

DIMENSIONES 2 RANURAS

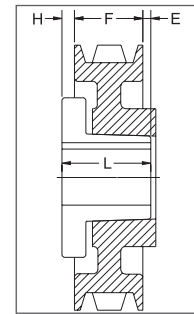
O.D.	Dia. Datum	No. de parte	Precio de lista \$	F = 1 3/32 pulgadas					
				H	Tipo	B	L	E	Peso
2.20	2.15	2-3V2.20^{1*}	28.80	1 1/64	10B	JA	1	1 7/64	0.9
2.35	2.30	2-3V2.35^{1*}	29.60	1 1/64	10B	JA	1	1 7/64	1.0
2.50	2.45	2-3V2.50^{1*}	30.40	1 1/64	10B	JA	1	1 7/64	1.1
2.65	2.60	2-3V2.65²	31.20	25/64	6B	JA	1	31/64	0.8
2.80	2.75	2-3V2.80²	32.00	25/64	6B	JA	1	31/64	1.0
3.00	2.95	2-3V3.00²	32.80	25/64	6B	JA	1	31/64	1.2
3.15	3.10	2-3V3.15²	34.00	25/64	6B	JA	1	31/64	1.4
3.35	3.30	2-3V3.35²	35.20	1/2	6B	SH	1 1/4	11/32	1.2
3.65	3.60	2-3V3.65²	36.40	1/2	6B	SH	1 1/4	11/32	1.6
4.12	4.07	2-3V4.12	40.00	9/32	6B	SH	1 1/4	1/8	2.2
4.50	4.45	2-3V4.50	44.00	9/32	6B	SH	1 1/4	1/8	2.7
4.75	4.70	2-3V4.75	48.00	9/32	6B	SH	1 1/4	1/8	3.2
5.00	4.95	2-3V5.00	52.00	9/32	6B	SH	1 1/4	1/8	3.7
5.30	5.25	2-3V5.30	54.00	9/32	6B	SH	1 1/4	1/8	4.2
5.60	5.55	2-3V5.60	56.00	9/32	6B	SH	1 1/4	1/8	4.6
6.00	5.95	2-3V6.00	58.00	9/32	6W	SH	1 1/4	1/8	5.0
6.50	6.45	2-3V6.50	64.00	3/8	6W	SDS	1 5/16	5/32	5.8
6.90	6.85	2-3V6.90	70.00	3/8	6W	SDS	1 5/16	5/32	6.4
8.00	7.95	2-3V8.00	72.00	3/8	6A	SDS	1 5/16	5/32	6.6
10.60	10.55	2-3V10.60	110.00	5/8	5A	SK	1 7/8	5/32	11.7
14.00	13.95	2-3V14.00	174.00	5/8	5A	SK	1 7/8	5/32	17.9
19.00	18.95	2-3V19.00	204.00	13/16	11A	SK	1 7/8	1/32	26.6
25.00	24.95	2-3V25.00	360.00	13/16	5A	SF	2	3/32	33.4

P.D. para correas "3V" = O.D.

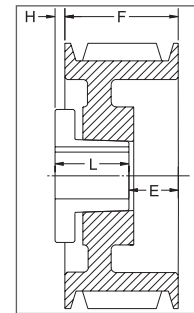
¹ Montaje inverso únicamente

² Se puede montar esta polea únicamente a la inversa con los tornillos estándar del buje. Se requiere tornillos especiales (Maska no los suministra) para efectuar el montaje estándar. (ver página 11)

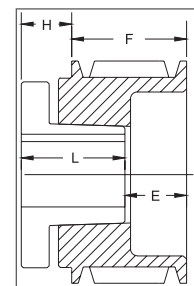
* Tornillos para montaje suministrados por Maska con esta polea.



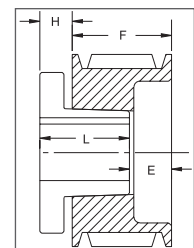
Tipo 5



Tipo 6



Tipo 10



Tipo 11

SECCIÓN 3V

DIMENSIONES 3 RANURAS

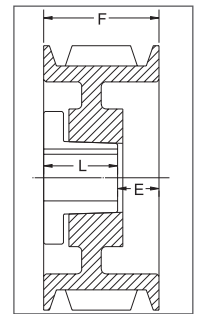
O.D.	Dia. Datum	No. de parte	Precio de lista \$	F = 1 1/2 pulgadas					
				H	Tipo	B	L	E	Peso
2.65	2.60	3-3V2.65²	36.80	25/64	6B	JA	1	57/64	1.1
2.80	2.75	3-3V2.80²	37.60	25/64	6B	JA	1	57/64	1.3
3.00	2.95	+3-3V3.00^{1*}	38.80	1 1/32	10B	SH	1 1/4	1 9/32	1.6
3.15	3.10	+3-3V3.15^{1*}	40.00	1	10B	SH	1 1/4	1 1/4	2.0
3.35	3.30	3-3V3.35²	41.20	9/16	6B	SH	1 1/4	13/16	1.8
3.65	3.60	3-3V3.65²	42.40	9/16	6B	SH	1 1/4	13/16	2.4
4.12	4.07	3-3V4.12	44.00	0	4B	SH	1 1/4	1/4	2.7
4.50	4.45	3-3V4.50	50.00	0	4B	SDS	1 5/16	3/16	3.0
4.75	4.70	3-3V4.75	54.00	0	4B	SDS	1 5/16	3/16	3.7
5.00	4.95	3-3V5.00	58.00	0	4B	SDS	1 5/16	3/16	4.2
5.30	5.25	3-3V5.30	60.00	0	4B	SDS	1 5/16	3/16	4.7
5.60	5.55	3-3V5.60	62.00	0	4B	SDS	1 5/16	3/16	5.2
6.00	5.95	3-3V6.00	66.00	0	4B	SDS	1 5/16	3/16	6.2
6.50	6.45	3-3V6.50	68.00	0	4W	SDS	1 5/16	3/16	6.7
6.90	6.85	3-3V6.90	80.00	0	4W	SDS	1 5/16	3/16	7.5
8.00	7.95	3-3V8.00	86.00	5/8	6A	SK	1 7/8	1/4	9.8
10.60	10.55	3-3V10.60	126.00	5/8	6A	SK	1 7/8	1/4	14.0
14.00	13.95	3-3V14.00	184.00	5/8	6A	SK	1 7/8	1/4	19.4
19.00	18.95	3-3V19.00	216.00	13/16	11A	SF	2	5/16	32.1
25.00	24.95	3-3V25.00	400.00	13/16	11A	SF	2	5/16	38.5
33.50	33.45	3-3V33.50	720.00	23/32	6A	SF	2	7/32	79.3

P.D. para correas "3V" = O.D. + para 3-3V3.00: F=1.912" + para 3-3V3.15: F=1 7/8"

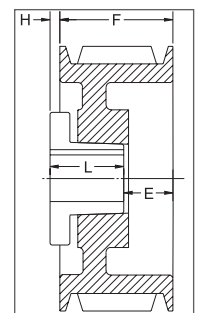
¹ Montaje inverso únicamente

² Se puede montar esta polea únicamente a la inversa con los tornillos estándar del buje. Se requiere tornillos especiales (Maska no los suministra) para efectuar el montaje estándar. (ver página 11)

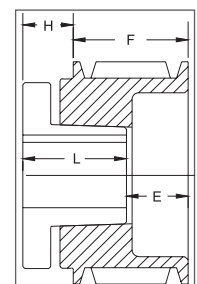
* Tornillos para montaje suministrados por Maska con esta polea.



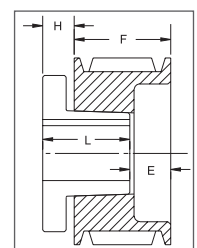
Tipo 4



Tipo 6



Tipo 10

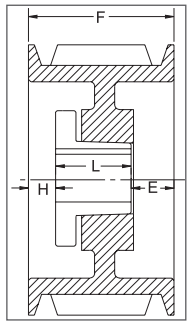


Tipo 11

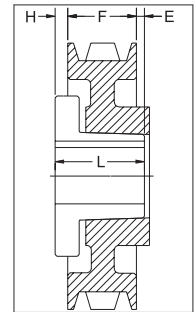
SECCIÓN 3V

DIMENSIONES 4 RANURAS

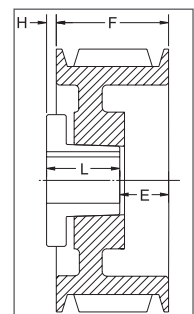
O.D.	Dia. Datum	No. de parte	Precio de lista \$	F = 1 29/32 pulgadas					Peso
				H	Tipo	B	L	E	
2.65	2.60	4-3V2.65 ²	42.40	25/64	6B	JA	1	1 19/64	1.4
2.80	2.75	4-3V2.80 ²	42.80	25/64	6B	JA	1	1 19/64	1.6
3.00	2.95	4-3V3.00 ^{*1}	43.20	1 1/32	10B	SH	1 1/4	1 11/16	2.3
3.15	3.10	4-3V3.15 ^{*1}	44.80	1	10B	SH	1 1/4	1 21/32	2.7
3.35	3.30	4-3V3.35 ²	46.40	1/2	6B	SH	1 1/4	1 5/32	2.3
3.65	3.60	4-3V3.65 ²	48.00	1/2	6B	SH	1 1/4	1 5/32	3.1
4.12	4.07	4-3V4.12	50.00	3/16	1B	SH	1 1/4	15/32	3.2
4.50	4.45	4-3V4.50	52.00	3/16	1B	SDS	1 5/16	13/32	3.4
4.75	4.70	4-3V4.75	56.00	1/8	1B	SDS	1 5/16	15/32	4.4
5.00	4.95	4-3V5.00	60.00	1/8	1B	SDS	1 5/16	15/32	5.0
5.30	5.25	4-3V5.30	64.00	1/8	1B	SDS	1 5/16	15/32	6.0
5.60	5.55	4-3V5.60	66.00	1/8	1B	SDS	1 5/16	15/32	6.2
6.00	5.95	4-3V6.00	70.00	1/4	6B	SK	1 7/8	9/32	7.8
6.50	6.45	4-3V6.50	72.00	1/4	6B	SK	1 7/8	9/32	9.5
6.90	6.85	4-3V6.90	82.00	1/4	6B	SK	1 7/8	9/32	11.1
8.00	7.95	4-3V8.00	88.00	1/4	6A	SK	1 7/8	9/32	11.2
10.60	10.55	4-3V10.60	128.00	1/4	6A	SK	1 7/8	9/32	16.0
14.00	13.95	4-3V14.00	196.00	1/4	6A	SK	1 7/8	9/32	25.0
19.00	18.95	4-3V19.00	252.00	1/16	5A	SF	2	1/32	39.8
25.00	24.95	4-3V25.00	412.00	7/16	6A	SF	2	11/32	51.1
33.50	33.45	4-3V33.50	780.00	25/32	6A	E	2 5/8	1/16	94.1



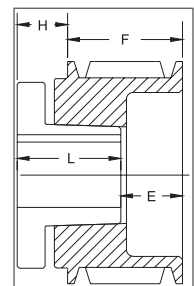
Tipo 1



Tipo 5



Tipo 6



Tipo 10

P.D. para correas "3V" = O.D.

¹ Montaje inverso únicamente

² Se puede montar esta polea únicamente a la inversa con los tornillos estándar del buje. Se requiere tornillos especiales (Maska no los suministra) para efectuar el montaje estándar. (ver página 11)

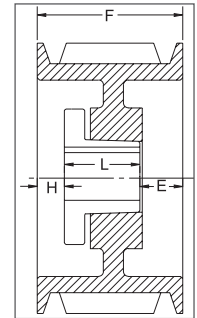
* Tornillos para montaje suministrados por Maska con esta polea.



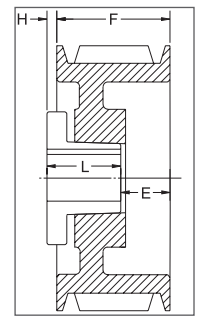
SECCIÓN 3V

DIMENSIONES 5 RANURAS

O.D.	Dia. Datum	No. de parte	Precio de lista \$	F = 2 5/16 pulgadas					Peso
				H	Tipo	B	L	E	
4.75	4.70	5-3V4.75	62.00	1/8	1B	SDS	1 5/16	7/8	4.7
5.00	4.95	5-3V5.00	68.00	1/8	1B	SDS	1 5/16	7/8	6.0
5.30	5.25	5-3V5.30	70.00	1/16	1B	SK	1 7/8	3/8	6.2
5.60	5.55	5-3V5.60	76.00	1/32	1B	SK	1 7/8	13/32	7.4
6.00	5.95	5-3V6.00	78.00	1/16	1B	SK	1 7/8	3/8	8.8
6.50	6.45	5-3V6.50	80.00	1/16	1B	SK	1 7/8	3/8	9.9
6.90	6.85	5-3V6.90	88.00	1/32	1B	SK	1 7/8	13/32	11.5
8.00	7.95	5-3V8.00	94.00	1/16	1W	SK	1 7/8	3/8	14.5
10.60	10.55	5-3V10.60	130.00	5/32	1A	SK	1 7/8	9/32	19.3
14.00	13.95	5-3V14.00	232.00	3/32	6A	SF	2	13/32	26.5
19.00	18.95	5-3V19.00	292.00	3/32	1A	SF	2	7/32	33.9
25.00	24.95	5-3V25.00	436.00	7/16	6A	E	2 5/8	1/8	60.7
33.50	33.45	5-3V33.50	850.00	3/8	6A	E	2 5/8	1/16	107.0



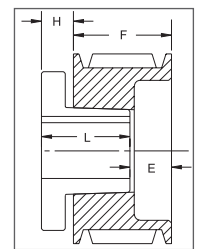
Tipo 1



Tipo 6

DIMENSIONES 6 RANURAS

O.D.	Dia. Datum	No. de parte	Precio de lista \$	F = 2 23/32 pulgadas					Peso
				H	Tipo	B	L	E	
4.75	4.70	6-3V4.75^{1*}	84.00	13/16	11B	SK	1 7/8	1 21/32	5.8
5.00	4.95	6-3V5.00¹	86.00	13/16	11B	SK	1 7/8	1 21/32	7.1
5.30	5.25	6-3V5.30	88.00	15/32	1B	SK	1 7/8	3/8	6.8
5.60	5.55	6-3V5.60	90.00	7/16	1B	SK	1 7/8	13/32	8.2
6.00	5.95	6-3V6.00	92.00	7/16	1B	SK	1 7/8	13/32	9.7
6.50	6.45	6-3V6.50	94.00	1/16	1B	SK	1 7/8	25/32	10.8
6.90	6.85	6-3V6.90	112.00	7/16	1B	SK	1 7/8	13/32	12.2
8.00	7.95	6-3V8.00	124.00	1/16	1W	SK	1 7/8	25/32	16.0
10.60	10.55	6-3V10.60	144.00	5/32	1A	SF	2	9/16	18.7
14.00	13.95	6-3V14.00	248.00	3/32	1A	SF	2	5/8	30.5
19.00	18.95	6-3V19.00	308.00	1/32	6A	E	2 5/8	1/8	47.6
25.00	24.95	6-3V25.00	452.00	1/32	6A	E	2 5/8	1/8	66.9
33.50	33.45	6-3V33.50	900.00	1/32	1A	E	2 5/8	1/16	121.6



Tipo 11

P.D. para correas "3V" = O.D.

¹ Montaje inverso únicamente

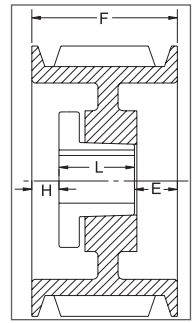
* Tornillos para montaje suministrados por Maska con esta polea.

POLEAS

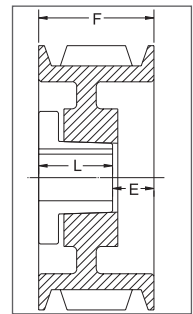
SECCIÓN 3V

DIMENSIONES 8 RANURAS

O.D.	Dia. Datum	No. de parte	Precio de lista \$	F = 3 17/32 pulgadas					Peso
				H	Tipo	B	L	E	
4.75	4.70	8-3V4.75 ¹	106.00	13/16	11B	SK	1 7/8	2 15/32	7.2
5.00	4.95	8-3V5.00 ¹	110.00	13/16	11B	SK	1 7/8	2 15/32	8.9
5.30	5.25	8-3V5.30	124.00	7/16	1B	SK	1 7/8	1 7/32	8.3
5.60	5.55	8-3V5.60	126.00	7/16	1B	SK	1 7/8	1 7/32	9.5
6.00	5.95	8-3V6.00	128.00	7/16	1B	SK	1 7/8	1 7/32	11.7
6.50	6.45	8-3V6.50	130.00	7/16	1B	SK	1 7/8	1 7/32	13.6
6.90	6.85	8-3V6.90	132.00	7/16	1B	SK	1 7/8	1 7/32	15.4
8.00	7.95	8-3V8.00	148.00	5/16	1W	SF	2	1 7/32	19.2
10.60	10.55	8-3V10.60	210.00	5/32	1A	SF	2	1 3/8	22.5
14.00	13.95	8-3V14.00	284.00	1/8	6A	E	2 5/8	1 1/32	42.9
19.00	18.95	8-3V19.00	444.00	1/8	6A	E	2 5/8	1 1/32	66.6
25.00	24.95	8-3V25.00	520.00	3/16	6A	E	2 5/8	1 3/32	92.2
33.50	33.45	8-3V33.50	980.00	15/32	6A	F	3 5/8	3/8	153.0



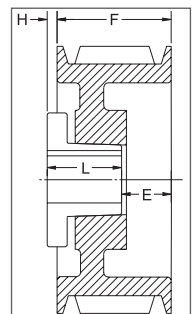
Tipo 1



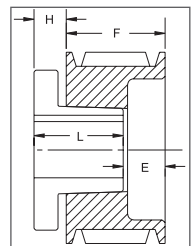
Tipo 4

DIMENSIONES 10 RANURAS

O.D.	Dia. Datum	No. de parte	Precio de lista \$	F = 4 11/32 pulgadas					Peso
				H	Tipo	B	L	E	
4.75	4.70	10-3V4.75 ¹	126.00	13/16	11B	SK	1 7/8	3 9/32	8.6
5.00	4.95	10-3V5.00 ¹	128.00	13/16	11B	SK	1 7/8	3 9/32	10.7
5.30	5.25	10-3V5.30	130.00	9/16	1B	SK	1 7/8	1 29/32	9.6
5.60	5.55	10-3V5.60	132.00	9/16	1B	SK	1 7/8	1 29/32	11.9
6.00	5.95	10-3V6.00	134.00	9/16	1B	SK	1 7/8	1 29/32	13.45
6.50	6.45	10-3V6.50	144.00	9/16	1B	SK	1 7/8	1 29/32	14.1
6.90	6.85	10-3V6.90	146.00	9/16	1B	SK	1 7/8	1 29/32	17.5
8.00	7.95	10-3V8.00	194.00	11/16	1W	SF	2	1 21/32	21.55
10.60	10.55	10-3V10.60	250.00	0	4W	E	2 5/8	1 23/32	31.6
14.00	13.95	10-3V14.00	320.00	0	4A	E	2 5/8	1 23/32	41.6
19.00	18.95	10-3V19.00	472.00	0	4A	E	2 5/8	1 23/32	74.0
25.00	24.95	10-3V25.00	596.00	1/16	6A	F	3 5/8	25/32	105.0
33.50	33.45	10-3V33.50	1100.00	1/16	6A	F	3 5/8	25/32	180.0



Tipo 6



Tipo 11

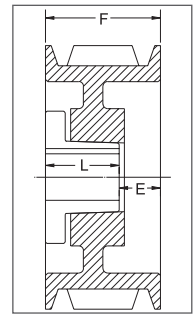
P.D. para correas "3V" = O.D.

¹ Montaje inverso únicamente

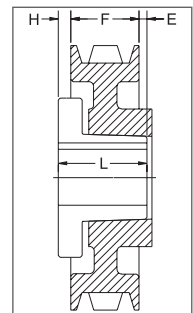
SECCIÓN 5V

DIMENSIONES 2 RANURAS

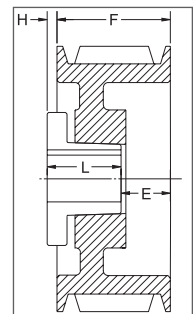
O.D.	Dia. Datum	No. de parte	Precio de lista \$	F = 1 11/16 pulgadas					
				H	Tipo	B	L	E	Peso
4.40	4.30	2-5V4.40 ²	73.00	15/32	6B	SH	1 1/4	29/32	3.4
4.65	4.55	2-5V4.65 ^{1*}	79.00	11/16	11B	SDS	1 5/16	1 1/16	3.6
4.90	4.80	2-5V4.90	85.00	7/32	4B	SDS	1 5/16	3/8	3.9
5.20	5.10	2-5V5.20	91.00	7/32	6B	SDS	1 5/16	19/32	4.8
5.50	5.40	2-5V5.50	97.00	7/32	6B	SDS	1 5/16	19/32	5.5
5.90	5.80	2-5V5.90	103.00	7/32	6B	SDS	1 5/16	19/32	6.5
6.30	6.20	2-5V6.30	109.00	7/16	6B	SK	1 7/8	1/4	9.6
6.70	6.60	2-5V6.70	115.00	7/16	6B	SK	1 7/8	1/4	9.3
7.10	7.00	2-5V7.10	120.00	3/8	6B	SK	1 7/8	3/16	10.6
7.50	7.40	2-5V7.50	122.00	3/8	6B	SK	1 7/8	3/16	12.1
8.00	7.90	2-5V8.00	124.00	3/8	6B	SK	1 7/8	3/16	14.3
8.50	8.40	2-5V8.50	128.00	3/8	6B	SK	1 7/8	3/16	16.2
9.00	8.90	2-5V9.00	136.00	3/8	6B	SK	1 7/8	3/16	18.5
9.25	9.15	2-5V9.25	144.00	3/8	6W	SK	1 7/8	3/16	17.0
9.75	9.65	2-5V9.75	148.00	3/8	6W	SK	1 7/8	3/16	18.2
10.30	10.20	2-5V10.30	152.00	3/8	6W	SK	1 7/8	3/16	18.0
10.90	10.80	2-5V10.90	156.00	3/8	6W	SK	1 7/8	3/16	20.8
11.30	11.20	2-5V11.30	160.00	3/8	6A	SK	1 7/8	3/16	16.9
11.80	11.70	2-5V11.80	162.00	3/8	6A	SK	1 7/8	3/16	18.6
12.50	12.40	2-5V12.50	164.00	3/8	6A	SF	2	1/16	20.8
13.20	13.10	2-5V13.20	176.00	3/8	6A	SF	2	1/16	22.0
14.00	13.90	2-5V14.00	230.00	3/8	6A	SF	2	1/16	24.8
15.00	14.90	2-5V15.00	234.00	3/8	6A	SF	2	1/16	26.6
16.00	15.90	2-5V16.00	252.00	3/8	6A	SF	2	1/16	34.9
18.70	18.60	2-5V18.70	300.00	3/8	6A	SF	2	1/16	43.8
21.20	21.10	2-5V21.20	416.00	3/8	6A	SF	2	1/16	43.8
23.60	23.50	2-5V23.60	480.00	5/16	5A	E	2 5/8	5/8	61.7
28.00	27.90	2-5V28.00	520.00	5/16	5A	E	2 5/8	5/8	73.0



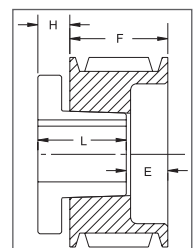
Tipo 4



Tipo 5



Tipo 6



Tipo 11

P.D. para correas "5V" = O.D.

¹ Montaje inverso únicamente

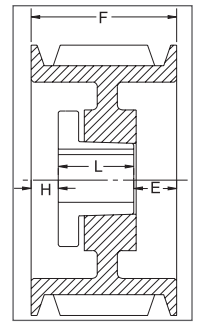
² Se puede montar esta polea únicamente a la inversa con los tornillos estándar del buje. Se requiere tornillos especiales (Maska no los suministra) para efectuar el montaje estándar. (ver página 11)

* Tornillos para montaje suministrados por Maska con esta polea.

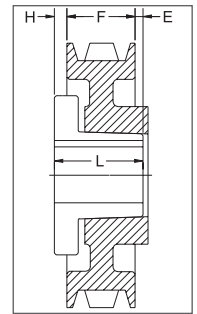
SECCIÓN 5V

DIMENSIONES 3 RANURAS

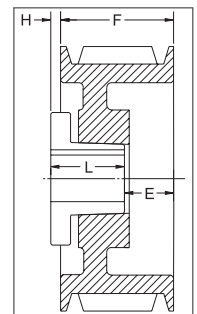
O.D.	Dia. Datum	No. de parte	Precio de lista \$	F = 2 3/8 pulgadas					Peso
				H	Tipo	B	L	E	
4.40	4.30	3-5V4.40 ^{1*}	79.00	11/16	11B	SDS	1 5/16	1 3/4	4.3
4.65	4.55	3-5V4.65 ^{1*}	85.00	11/16	11B	SDS	1 5/16	1 3/4	5.2
4.90	4.80	3-5V4.90 [*]	91.00	3/8	1B	SDS	1 5/16	11/16	4.9
5.20	5.10	3-5V5.20	97.00	3/8	1B	SDS	1 5/16	11/16	6.1
5.50	5.40	3-5V5.50	103.00	5/16	1B	SDS	1 5/16	3/4	6.4
5.90	5.80	3-5V5.90	109.00	5/16	1B	SDS	1 5/16	3/4	8.2
6.30	6.20	3-5V6.30	115.00	1/4	1B	SK	1 7/8	1/4	9.0
6.70	6.60	3-5V6.70	121.00	1/4	1B	SK	1 7/8	1/4	12.7
7.10	7.00	3-5V7.10	128.00	1/16	6B	SF	2	7/16	12.3
7.50	7.40	3-5V7.50	134.00	1/16	6B	SF	2	7/16	13.8
8.00	7.90	3-5V8.00	142.00	1/16	6B	SF	2	7/16	16.2
8.50	8.40	3-5V8.50	146.00	1/16	6B	SF	2	7/16	18.3
9.00	8.90	3-5V9.00	150.00	1/16	6B	SF	2	7/16	20.6
9.25	9.15	3-5V9.25	156.00	1/16	6W	SF	2	7/16	20.2
9.75	9.65	3-5V9.75	162.00	1/16	6W	SF	2	7/16	20.8
10.30	10.20	3-5V10.30	172.00	1/16	6W	SF	2	7/16	20.5
10.90	10.80	3-5V10.90	176.00	1/16	6W	SF	2	7/16	23.4
11.30	11.20	3-5V11.30	180.00	1/16	6A	SF	2	7/16	22.7
11.80	11.70	3-5V11.80	194.00	1/16	6A	SF	2	7/16	24.4
12.50	12.40	3-5V12.50	202.00	11/16	6A	E	2 5/8	7/16	31.1
13.20	13.10	3-5V13.20	212.00	11/16	6A	E	2 5/8	7/16	32.2
14.00	13.90	3-5V14.00	258.00	11/16	6A	E	2 5/8	7/16	35.5
15.00	14.90	3-5V15.00	274.00	11/16	6A	E	2 5/8	7/16	38.3
16.00	15.90	3-5V16.00	282.00	11/16	6A	E	2 5/8	7/16	40.1
18.70	18.60	3-5V18.70	328.00	5/16	6A	E	2 5/8	1/16	46.6
21.20	21.10	3-5V21.20	440.00	11/16	6A	E	2 5/8	7/16	57.2
23.60	23.50	3-5V23.60	500.00	11/32	6A	E	2 5/8	3/32	73.0
28.00	27.90	3-5V28.00	540.00	5/16	6A	E	2 5/8	1/16	97.0
31.50	31.40	3-5V31.50	920.00	31/32	5A	F	3 5/8	9/32	128.0
37.50	37.40	3-5V37.50	1180.00	31/32	5A	F	3 5/8	9/32	158.0
50.00	49.90	3-5V50.00	1780.00	31/32	5A	F	3 5/8	9/32	218.0



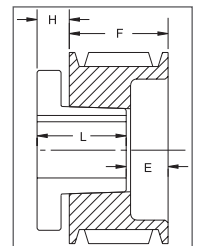
Tipo 1



Tipo 5



Tipo 6



Tipo 11

P.D. para correas "5V" = O.D.

¹ Montaje inverso únicamente

* Tornillos para montaje suministrados por Maska con esta polea.

SECCIÓN 5V

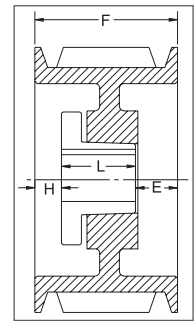
DIMENSIONES 4 RANURAS

O.D.	Dia. Datum	No. de parte	Precio de lista \$	F = 3 1/16 pulgadas					
				H	Tipo	B	L	E	Peso
4.40	4.30	4-5V4.40 ^{1*}	92.00	11/16	11B	SD	1 13/16	1 15/16	5.4
4.65	4.55	4-5V4.65 ^{1*}	98.00	11/16	11B	SD	1 13/16	1 15/16	6.1
4.90	4.80	4-5V4.90 ^{1*}	104.00	5/8	1B	SD	1 13/16	5/8	6.5
5.20	5.10	4-5V5.20	110.00	5/8	1B	SD	1 13/16	5/8	8.2
5.50	5.40	4-5V5.50	116.00	5/8	1B	SD	1 13/16	5/8	9.4
5.90	5.80	4-5V5.90	122.00	5/8	1B	SD	1 13/16	5/8	10.0
6.30	6.20	4-5V6.30	128.00	1/2	1B	SK	1 7/8	11/16	11.7
6.70	6.60	4-5V6.70	134.00	1/2	1B	SK	1 7/8	11/16	13.4
7.10	7.00	4-5V7.10	140.00	0	4B	SF	2	1 1/16	14.5
7.50	7.40	4-5V7.50	148.00	0	4B	SF	2	1 1/16	16.3
8.00	7.90	4-5V8.00	156.00	0	4B	E	2 5/8	7/16	17.9
8.50	8.40	4-5V8.50	162.00	0	4B	E	2 5/8	7/16	21.7
9.00	8.90	4-5V9.00	164.00	0	4B	E	2 5/8	7/16	24.4
9.25	9.15	4-5V9.25	168.00	0	4B	E	2 5/8	7/16	26.2
9.75	9.65	4-5V9.75	196.00	3/8	1B	E	2 5/8	1/16	29.4
10.30	10.20	4-5V10.30	200.00	0	4W	E	2 5/8	7/16	28.6
10.90	10.80	4-5V10.90	206.00	0	4W	E	2 5/8	7/16	30.3
11.30	11.20	4-5V11.30	224.00	3/8	1W	E	2 5/8	1/16	30.9
11.80	11.70	4-5V11.80	226.00	0	4W	E	2 5/8	7/16	32.5
12.50	12.40	4-5V12.50	234.00	3/8	1A	E	2 5/8	1/16	35.0
13.20	13.10	4-5V13.20	256.00	0	4A	E	2 5/8	7/16	37.4
14.00	13.90	4-5V14.00	290.00	0	4A	E	2 5/8	7/16	41.1
15.00	14.90	4-5V15.00	320.00	0	4A	E	2 5/8	7/16	43.7
16.00	15.90	4-5V16.00	340.00	0	4A	E	2 5/8	7/16	46.9
18.70	18.60	4-5V18.70	380.00	3/16	1A	E	2 5/8	1/4	58.5
21.20	21.10	4-5V21.20	512.00	3/16	1A	E	2 5/8	1/4	77.0
23.60	23.50	4-5V23.60	546.00	21/32	6A	F	3 5/8	3/32	98.0
28.00	27.90	4-5V28.00	620.00	21/32	6A	F	3 5/8	3/32	118.0
31.50	31.40	4-5V31.50	970.00	11/32	5A	F	3 5/8	7/32	141.0
37.50	37.40	4-5V37.50	1240.00	21/32	6A	F	3 5/8	3/32	178.0
50.00	49.90	4-5V50.00	1880.00	15/16	5A	J	4 1/2	1/2	269.0

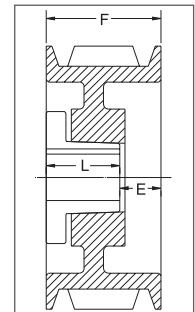
P.D. para correas "5V" = O.D.

¹ Montaje inverso únicamente

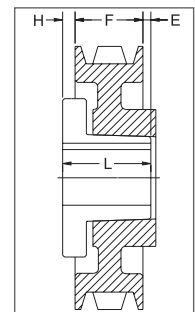
* Tornillos para montaje suministrados por Maska con esta polea.



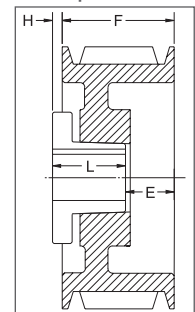
Tipo 1



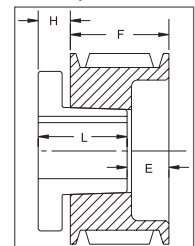
Tipo 4



Tipo 5



Tipo 6



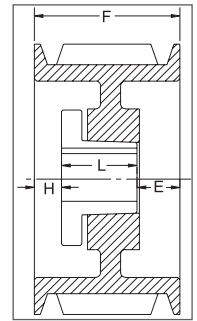
Tipo 11

SECCIÓN 5V

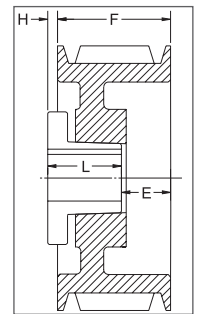
DIMENSIONES 5 RANURAS

POLEAS

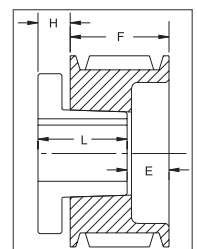
O.D.	Dia. Datum	No. de parte	Precio de lista \$	F = 3 3/4 pulgadas					
				H	Tipo	B	L	E	Peso
4.40	4.30	5-5V4.40 ^{1*}	104.00	11/16	11B	SD	1 13/16	2 5/8	6.3
4.65	4.55	5-5V4.65 ^{1*}	110.00	11/16	11B	SD	1 13/16	2 5/8	7.0
4.90	4.80	5-5V4.90 [*]	116.00	5/8	1B	SD	1 13/16	1 5/16	7.9
5.20	5.10	5-5V5.20	122.00	5/8	1B	SD	1 13/16	1 5/16	9.7
5.50	5.40	5-5V5.50	128.00	5/8	1B	SD	1 13/16	1 5/16	10.9
5.90	5.80	5-5V5.90	134.00	1/2	1B	SK	1 7/8	1 3/8	11.2
6.30	6.20	5-5V6.30	140.00	1/2	1B	SK	1 7/8	1 3/8	12.2
6.70	6.60	5-5V6.70	146.00	1/2	1B	SF	2	1 1/4	13.2
7.10	7.00	5-5V7.10	156.00	5/16	1B	SF	2	1 7/16	16.7
7.50	7.40	5-5V7.50	174.00	5/16	1B	SF	2	1 7/16	18.5
8.00	7.90	5-5V8.00	184.00	5/16	1B	E	2 5/8	13/16	20.0
8.50	8.40	5-5V8.50	190.00	5/16	1B	E	2 5/8	13/16	24.4
9.00	8.90	5-5V9.00	198.00	5/16	1B	E	2 5/8	13/16	27.4
9.25	9.15	5-5V9.25	202.00	5/16	1B	E	2 5/8	13/16	29.2
9.75	9.65	5-5V9.75	218.00	5/16	1B	E	2 5/8	13/16	32.8
10.30	10.20	5-5V10.30	220.00	5/16	1W	E	2 5/8	13/16	31.1
10.90	10.80	5-5V10.90	222.00	5/16	1W	E	2 5/8	13/16	33.0
11.30	11.20	5-5V11.30	242.00	5/16	1W	E	2 5/8	13/16	35.0
11.80	11.70	5-5V11.80	244.00	5/16	1W	E	2 5/8	13/16	37.3
12.50	12.40	5-5V12.50	282.00	5/16	1W	E	2 5/8	13/16	38.9
13.20	13.10	5-5V13.20	300.00	5/16	1W	E	2 5/8	13/16	41.8
14.00	13.90	5-5V14.00	344.00	5/16	1A	E	2 5/8	13/16	45.3
15.00	14.90	5-5V15.00	384.00	5/16	1A	E	2 5/8	13/16	49.1
16.00	15.90	5-5V16.00	404.00	5/16	1A	E	2 5/8	13/16	51.9
18.70	18.60	5-5V18.70	432.00	9/32	6A	F	3 5/8	13/32	86.0
21.20	21.10	5-5V21.20	536.00	7/32	6A	F	3 5/8	11/32	84.7
23.60	23.50	5-5V23.60	586.00	7/32	6A	F	3 5/8	11/32	111.0
28.00	27.90	5-5V28.00	660.00	7/32	6A	F	3 5/8	11/32	128.0
31.50	31.40	5-5V31.50	1080.00	19/64	6A	J	4 1/2	25/64	174.0
37.50	37.40	5-5V37.50	1380.00	7/8	6A	J	4 1/2	1/8	199.0
50.00	49.90	5-5V50.00	1920.00	7/8	6A	J	4 1/2	1/8	319.0



Tipo 1



Tipo 6



Tipo 11

P.D. para correas "5V" = O.D.

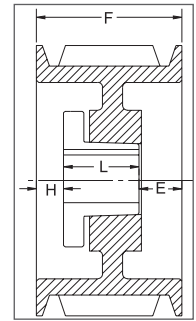
¹ Montaje inverso únicamente

* Tornillos para montaje suministrados por Maska con esta polea.

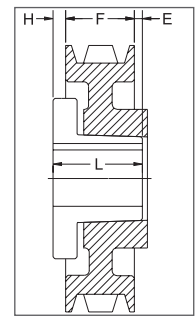
SECCIÓN 5V

DIMENSIONES 6 RANURAS

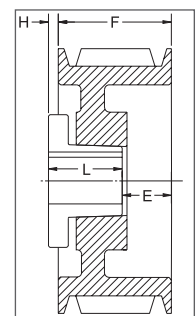
O.D.	Dia. Datum	No. de parte	Precio de lista \$	F = 4 7/16 pulgadas					Peso
				H	Tipo	B	L	E	
4.40	4.30	6-5V4.40*	114.00	11/16	11B	SD	1 13/16	3 5/16	8.4
4.65	4.55	6-5V4.65*	120.00	11/16	11B	SD	1 13/16	3 5/16	9.3
4.90	4.80	6-5V4.90*	126.00	5/8	1B	SD	1 13/16	2	8.9
5.20	5.10	6-5V5.20	132.00	5/8	1B	SD	1 13/16	2	10.9
5.50	5.40	6-5V5.50	138.00	5/8	1B	SD	1 13/16	2	13.4
5.90	5.80	6-5V5.90	144.00	1/2	1B	SK	1 7/8	2 1/16	12.8
6.30	6.20	6-5V6.30	150.00	1/2	1B	SK	1 7/8	2 1/16	15.3
6.70	6.60	6-5V6.70	154.00	13/16	1B	SF	2	1 5/8	16.1
7.10	7.00	6-5V7.10	160.00	9/16	1B	SF	2	1 7/8	18.8
7.50	7.40	6-5V7.50	176.00	9/16	1B	SF	2	1 7/8	20.8
8.00	7.90	6-5V8.00	186.00	9/16	1B	E	2 5/8	1 1/4	22.3
8.50	8.40	6-5V8.50	198.00	9/16	1B	E	2 5/8	1 1/4	27.1
9.00	8.90	6-5V9.00	220.00	9/16	1B	E	2 5/8	1 1/4	30.5
9.25	9.15	6-5V9.25	224.00	9/16	1B	E	2 5/8	1 1/4	32.2
9.75	9.65	6-5V9.75	228.00	9/16	1B	E	2 5/8	1 1/4	36.2
10.30	10.20	6-5V10.30	248.00	9/16	1W	E	2 5/8	1 1/4	34.4
10.90	10.80	6-5V10.90	260.00	9/16	1W	E	2 5/8	1 1/4	36.4
11.30	11.20	6-5V11.30	260.00	9/16	1W	E	2 5/8	1 1/4	39.3
11.80	11.70	6-5V11.80	262.00	9/16	1W	E	2 5/8	1 1/4	40.2
12.50	12.40	6-5V12.50	320.00	17/32	1W	F	3 5/8	9/32	54.2
13.20	13.10	6-5V13.20	342.00	17/32	1W	F	3 5/8	9/32	58.0
14.00	13.90	6-5V14.00	384.00	17/32	1W	F	3 5/8	9/32	59.9
15.00	14.90	6-5V15.00	424.00	17/32	1A	F	3 5/8	9/32	60.0
16.00	15.90	6-5V16.00	464.00	17/32	1A	F	3 5/8	9/32	64.7
18.70	18.60	6-5V18.70	520.00	3/32	1A	F	3 5/8	23/32	80.5
21.20	21.10	6-5V21.20	590.00	7/32	6A	F	3 5/8	1 1/32	96.3
23.60	23.50	6-5V23.60	660.00	15/32	6A	J	4 1/2	13/32	133.0
28.00	27.90	6-5V28.00	740.00	15/32	6A	J	4 1/2	13/32	179.0
31.50	31.40	6-5V31.50	1180.00	15/32	6A	J	4 1/2	13/32	198.0
37.50	37.40	6-5V37.50	1440.00	15/32	6A	J	4 1/2	13/32	239.0
50.00	49.90	6-5V50.00	2220.00	1 13/32	5A	M°	6 3/4	29/32	386.0



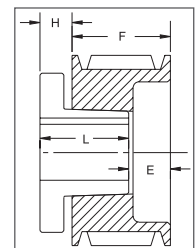
Tipo 1



Tipo 5



Tipo 6



Tipo 11

POLEAS

P.D. para correas "5V" = O.D.

°Nota: Los bujes M-N-P-W tienen un montaje estándar solamente con estas partes. Ver página 11 para las instrucciones de instalación.

† Montaje inverso únicamente

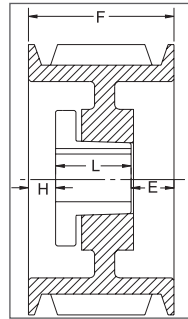
* Tornillos para montaje suministrados por Maska con esta polea.

SECCIÓN 5V

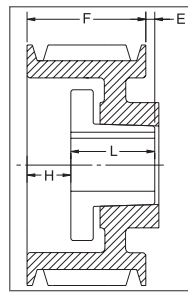
DIMENSIONES 8 RANURAS

POLEAS

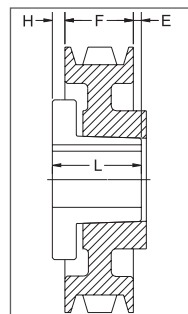
O.D.	Dia. Datum	No. de parte	Precio de lista \$	F = 5 13/16 pulgadas					Peso
				H	Tipo	B	L	E	
7.10	7.00	8-5V7.10	186.00	1 1/16	1B	SF	2	2 3/4	23
7.50	7.40	8-5V7.50	206.00	1 1/16	1B	SF	2	2 3/4	25.4
8.00	7.90	8-5V8.00	226.00	1 1/16	1B	E	2 5/8	2 1/8	26
8.50	8.40	8-5V8.50	248.00	1 1/16	1B	E	2 5/8	2 1/8	33
9.00	8.90	8-5V9.00	268.00	1 1/16	1B	E	2 5/8	2 1/8	36
9.25	9.15	8-5V9.25	300.00	1 1/32	1B	F	3 5/8	1 5/32	42
9.75	9.65	8-5V9.75	320.00	1 1/32	1B	F	3 5/8	1 5/32	47
10.30	10.20	8-5V10.30	340.00	1 1/32	1B	F	3 5/8	1 5/32	54
10.90	10.80	8-5V10.90	348.00	1 1/32	1B	F	3 5/8	1 5/32	61
11.30	11.20	8-5V11.30	356.00	1 1/32	1W	F	3 5/8	1 5/32	57
11.80	11.70	8-5V11.80	374.00	1 1/32	1W	F	3 5/8	1 5/32	59
12.50	12.40	8-5V12.50	388.00	1 1/32	1W	F	3 5/8	1 5/32	63
13.20	13.10	8-5V13.20	440.00	1 1/32	1W	F	3 5/8	1 5/32	67
14.00	13.90	8-5V14.00	480.00	1 1/32	1W	F	3 5/8	1 5/32	77
15.00	14.90	8-5V15.00	560.00	1 1/32	1A	F	3 5/8	1 5/32	79
16.00	15.90	8-5V16.00	640.00	1 1/32	1A	F	3 5/8	1 5/32	85
18.70	18.60	8-5V18.70	700.00	5/32	1A	J	4 1/2	1 5/32	112
21.20	21.10	8-5V21.20	760.00	7/32	6A	J	4 1/2	1 17/32	119
23.60	23.50	8-5V23.60	840.00	5/32	1A	J	4 1/2	1 5/32	154
28.00	27.90	8-5V28.00	1020.00	7/32	6A	J	4 1/2	1 17/32	179
31.50	31.40	8-5V31.50	1440.00	7/32	2A	M°	6 3/4	1 5/32	295
37.50	37.40	8-5V37.50	1780.00	9/32	5A	M°	6 3/4	21/32	326
50.00	49.90	8-5V50.00	2440.00	7/32	5A	M°	6 3/4	23/32	466



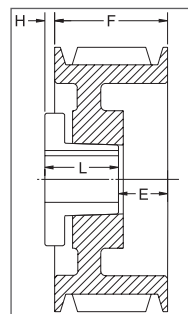
Tipo 1



Tipo 2



Tipo 5



Tipo 6

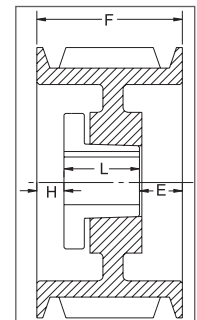
P.D. para correas "5V" = O.D.

°Nota: Los bujes M-N-P-W tienen un montaje estándar solamente con estas partes. Ver página 11 para las instrucciones de instalación.

SECCIÓN 5V

DIMENSIONES 10 RANURAS

O.D.	Dia. Datum	No. de parte	Precio de lista \$	F = 7 3/16 pulgadas					Peso
				H	Tipo	B	L	E	
8.00	7.90	10-5V8.00	252.00	1 13/16	1B	E	2 5/8	2 3/4	32
8.50	8.40	10-5V8.50	272.00	1 13/16	1B	E	2 5/8	2 3/4	38
9.00	8.90	10-5V9.00	300.00	1 23/32	1B	F	3 5/8	1 27/32	46
9.25	9.15	10-5V9.25	304.00	1 23/32	1B	F	3 5/8	1 27/32	48
9.75	9.65	10-5V9.75	360.00	1 23/32	1B	F	3 5/8	1 27/32	54
10.30	10.20	10-5V10.30	372.00	1 23/32	1B	F	3 5/8	1 27/32	61
10.90	10.80	10-5V10.90	384.00	1 23/32	1B	F	3 5/8	1 27/32	69
11.30	11.20	10-5V11.30	440.00	1 23/32	1B	F	3 5/8	1 27/32	73
11.80	11.70	10-5V11.80	480.00	1 23/32	1W	F	3 5/8	1 27/32	77
12.50	12.40	10-5V12.50	500.00	1 25/32	1W	J	4 1/2	29/32	93
13.20	13.10	10-5V13.20	580.00	1 25/32	1W	J	4 1/2	29/32	100
14.00	13.90	10-5V14.00	640.00	2 5/32	1W	J	4 1/2	17/32	90
15.00	14.90	10-5V15.00	720.00	2 5/32	1W	J	4 1/2	17/32	98
16.00	15.90	10-5V16.00	780.00	2 5/32	1A	J	4 1/2	17/32	99
18.70	18.60	10-5V18.70	860.00	2 5/32	1A	J	4 1/2	17/32	123
21.20	21.10	10-5V21.20	960.00	1 5/32	1A	J	4 1/2	1 17/32	139
23.60	23.50	10-5V23.60	1040.00	7/32	1A	M°	6 3/4	7/32	245
28.00	27.90	10-5V28.00	1280.00	7/32	1A	M°	6 3/4	7/32	256
31.50	31.40	10-5V31.50	1560.00	7/32	1A	M°	6 3/4	7/32	329
37.50	37.40	10-5V37.50	1840.00	7/32	1A	M°	6 3/4	7/32	356
50.00	49.90	10-5V50.00	2580.00	9/32	1A	M°	6 3/4	5/32	556



Tipo 1

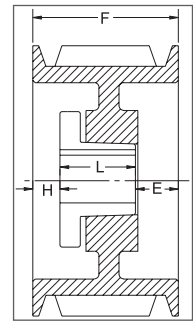
P.D. para correas "5V" = O.D.

°Nota: Los bujes M-N-P-W tienen un montaje estándar solamente con estas partes. Ver página 11 para las instrucciones de instalación.

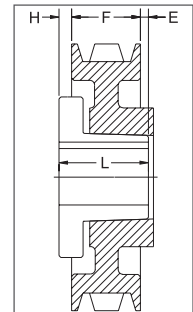
SECCIÓN 8V

DIMENSIONES 4 RANURAS

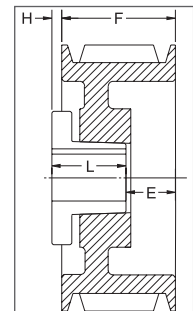
O.D.	Dia. Datum	No. de parte	Precio de lista \$	F = 4 7/8 pulgadas					Peso
				H	Tipo	B	L	E	
12.5	12.3	4-8V12.50	544.00	1/32	6W	F	3 5/8	1 9/32	56
13.2	13.0	4-8V13.20	552.00	1/32	6W	F	3 5/8	1 9/32	63
14.0	13.8	4-8V14.00	560.00	1/32	6W	F	3 5/8	1 9/32	65
15.0	14.8	4-8V15.00	596.00	1/32	6W	F	3 5/8	1 9/32	72
16.0	15.8	4-8V16.00	660.00	1/32	6A	F	3 5/8	1 9/32	80
17.0	16.8	4-8V17.00	720.00	1/32	1A	F	3 5/8	1 7/32	93
18.0	17.8	4-8V18.00	760.00	1/32	1A	F	3 5/8	1 7/32	105
19.0	18.8	4-8V19.00	790.00	1/32	6A	F	3 5/8	1 9/32	113
20.0	19.8	4-8V20.00	820.00	3/32	1A	J	4 1/2	9/32	125
21.2	21.0	4-8V21.20	840.00	3/32	1A	J	4 1/2	9/32	131
22.4	22.2	4-8V22.40	886.00	3/32	1A	J	4 1/2	9/32	150
24.8	24.6	4-8V24.80	1190.00	27/32	5A	M°	6 3/4	1 1/32	247
30.0	29.8	4-8V30.00	1350.00	27/32	5A	M°	6 3/4	1 1/32	230
35.5	35.3	4-8V35.50	1790.00	27/32	5A	M°	6 3/4	1 1/32	329
40.0	39.8	4-8V40.00	1970.00	27/32	5A	M°	6 3/4	1 1/32	325
44.5	44.3	4-8V44.50	2590.00	27/32	5A	M°	6 3/4	1 1/32	434
53.0	52.8	4-8V53.00	3240.00	27/32	5A	M°	6 3/4	1 1/32	425



Tipo 1



Tipo 5



Tipo 6

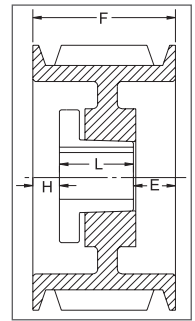
P.D. para correas "8V" = O.D.

°Nota: Los bujes M-N-P-W tienen un montaje estándar solamente con estas partes. Ver página 11 para las instrucciones de instalación.

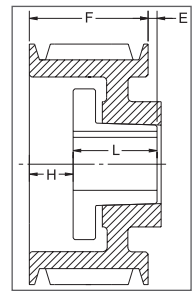
SECCIÓN 8V

DIMENSIONES 5 RANURAS

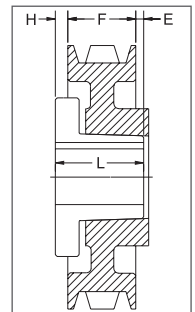
O.D.	Dia. Datum	No. de parte	Precio de lista \$	F = 6 pulgadas					Peso
				H	Tipo	B	L	E	
12.5	12.3	5-8V12.50	588.00	1 1/16	1W	F	3 5/8	1 5/16	64
13.2	13.0	5-8V13.20	618.00	1 1/16	1W	F	3 5/8	1 5/16	75
14.0	13.8	5-8V14.00	660.00	1 1/16	1W	F	3 5/8	1 5/16	77
15.0	14.8	5-8V15.00	700.00	1 3/32	1W	F	3 5/8	1 9/32	87
16.0	15.8	5-8V16.00	740.00	1 3/32	1A	F	3 5/8	1 9/32	93
17.0	16.8	5-8V17.00	846.00	19/32	1A	J	4 1/2	29/32	105
18.0	17.8	5-8V18.00	900.00	19/32	1A	J	4 1/2	29/32	117
19.0	18.8	5-8V19.00	960.00	19/32	1A	J	4 1/2	29/32	126
20.0	19.8	5-8V20.00	990.00	19/32	1A	J	4 1/2	29/32	135
21.2	21.0	5-8V21.20	1150.00	19/32	1A	J	4 1/2	29/32	160
22.4	22.2	5-8V22.40	1310.00	9/32	2A	M°	6 3/4	1 1/32	188
24.8	24.6	5-8V24.80	1390.00	5/16	2A	M°	6 3/4	1 1/16	266
30.0	29.8	5-8V30.00	1570.00	5/16	2A	M°	6 3/4	1 1/16	255
35.5	35.3	5-8V35.50	1990.00	5/16	2A	M°	6 3/4	1 1/16	391
40.0	39.8	5-8V40.00	2240.00	5/16	2A	M°	6 3/4	1 1/16	355
44.5	44.3	5-8V44.50	2990.00	1 5/16	5A	N°	8 1/8	13/16	538
53.0	52.8	5-8V53.00	3480.00	1 5/16	5A	N°	8 1/8	13/16	500



Tipo 1



Tipo 2



Tipo 5

POLEAS

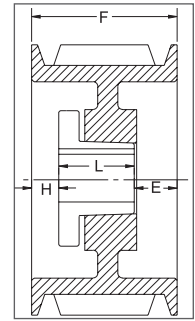
P.D. para correas "8V" = O.D.

°Nota: Los bujes M-N-P-W tienen un montaje estándar solamente con estas partes. Ver página 11 para las instrucciones de instalación.

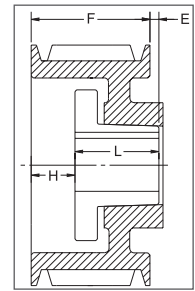
SECCIÓN 8V

DIMENSIONES 6 RANURAS

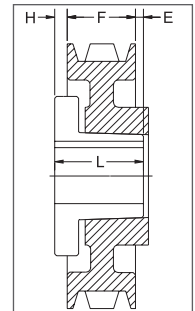
O.D.	Dia. Datum	No. de parte	Precio de lista \$	F = 7 1/8 pulgadas					Peso
				H	Tipo	B	L	E	
12.5	12.3	6-8V12.50	618.00	2 3/32	1B	F	3 5/8	1 13/32	79
13.2	13.0	6-8V13.20	660.00	1 1/16	1W	F	3 5/8	2 7/16	86
14.0	13.8	6-8V14.00	722.00	1 1/16	1W	F	3 5/8	2 7/16	92
15.0	14.8	6-8V15.00	774.00	1 5/32	1W	J	4 1/2	1 15/32	99
16.0	15.8	6-8V16.00	824.00	1 5/32	1W	J	4 1/2	1 15/32	119
17.0	16.8	6-8V17.00	928.00	1 5/32	1A	J	4 1/2	1 15/32	125
18.0	17.8	6-8V18.00	1000.00	1 5/32	1A	J	4 1/2	1 15/32	131
19.0	18.8	6-8V19.00	1040.00	1 5/32	1A	J	4 1/2	1 15/32	146
20.0	19.8	6-8V20.00	1190.00	1 9/32	2A	M°	6 3/4	29/32	153
21.2	21.0	6-8V21.20	1320.00	1 9/32	2W	M°	6 3/4	29/32	170
22.4	22.2	6-8V22.40	1560.00	1 9/32	2A	M°	6 3/4	29/32	205
24.8	24.6	6-8V24.80	1590.00	9/32	1A	M°	6 3/4	3/32	285
30.0	29.8	6-8V30.00	1610.00	9/32	1A	M°	6 3/4	3/32	291
35.5	35.3	6-8V35.50	2190.00	3/16	5A	N°	8 1/8	13/16	467
40.0	39.8	6-8V40.00	2440.00	3/16	2A	N°	8 1/8	1 3/16	401
44.5	44.3	6-8V44.50	3390.00	3/16	5A	N°	8 1/8	13/16	573
53.0	52.8	6-8V53.00	3720.00	3/16	5A	N°	8 1/8	13/16	520
58.0	57.8	-	-	-	-	-	-	-	-
63.0	62.8	6-8V63.00	6190.00	3/4	5A	P°	9 3/8	1 1/2	890
71.0	70.8	6-8V71.00	9000.00	3/4	5A	P°	9 3/8	1 1/2	1131



Tipo 1



Tipo 2



Tipo 5

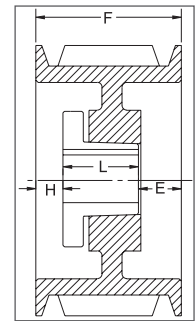
P.D. para correas "8V" = O.D.

°Nota: Los bujes M-N-P-W tienen un montaje estándar solamente con estas partes. Ver página 11 para las instrucciones de instalación.

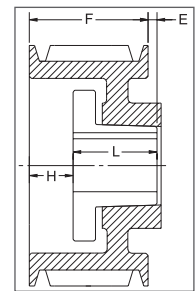
SECCIÓN 8V

DIMENSIONES 8 RANURAS

O.D.	Dia. Datum	No. de parte	Precio de lista \$	F = 9 3/8 pulgadas					
				H	Tipo	B	L	E	Peso
12.5	12.3	8-8V12.50	780.00	2 1/32	1B	J	4 1/2	2 27/32	100
13.2	13.0	8-8V13.20	824.00	2 1/32	1B	J	4 1/2	2 27/32	126
14.0	13.8	8-8V14.00	866.00	2 1/32	1W	J	4 1/2	2 27/32	124
15.0	14.8	8-8V15.00	928.00	2 1/32	1W	J	4 1/2	2 27/32	134
16.0	15.8	8-8V16.00	1010.00	2 5/32	1W	J	4 1/2	2 23/32	145
17.0	16.8	8-8V17.00	1124.00	2 9/32	1W	M°	6 3/4	11/32	213
18.0	17.8	8-8V18.00	1200.00	2 9/32	1W	M°	6 3/4	11/32	213
19.0	18.8	8-8V19.00	1240.00	2 9/32	1W	M°	6 3/4	11/32	221
20.0	19.8	8-8V20.00	1280.00	2 9/32	1W	M°	6 3/4	11/32	217
21.2	21.0	8-8V21.20	1380.00	2 9/32	1W	M°	6 3/4	11/32	239
22.4	22.2	8-8V22.40	1590.00	2 9/32	1A	M°	6 3/4	11/32	260
24.8	24.6	8-8V24.80	1790.00	3/16	1A	N°	8 1/8	1 1/16	417
30.0	29.8	8-8V30.00	1840.00	3/16	1A	N°	8 1/8	1 1/16	352
35.5	35.3	8-8V35.50	2390.00	3/16	1A	N°	8 1/8	1 1/16	575
40.0	39.8	8-8V40.00	2640.00	3/16	1A	N°	8 1/8	1 1/16	496
44.5	44.3	8-8V44.50	3790.00	1/4	2A	P°	9 3/8	1/4	783
53.0	52.8	8-8V53.00	3960.00	1/4	2A	P°	9 3/8	1/4	760
58.0	57.8	8-8V58.00	5500.00	1/4	2A	P°	9 3/8	1/4	1068
63.0	62.8	8-8V63.00	6990.00	1/4	2A	P°	9 3/8	1/4	1116
71.0	70.8	8-8V71.00	10000.00	0	5A	W°	11 3/8	2	1632



Tipo 1



Tipo 2

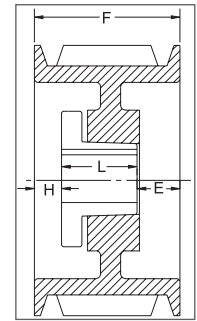
P.D. para correas "8V" = O.D.

°Nota: Los bujes M-N-P-W tienen un montaje estándar solamente con estas partes. Ver página 11 para las instrucciones de instalación.

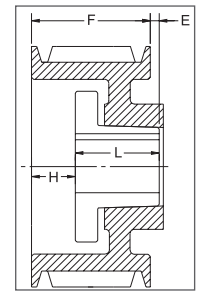
SECCIÓN 8V

DIMENSIONES 10 RANURAS

O.D.	Dia. Datum	No. de parte	Precio de lista \$	F = 11 5/8 pulgadas					Peso
				H	Tipo	B	L	E	
12.5	12.3	10-8V12.50	948.00	2 5/32	1B	J	4 1/2	4 31/32	148
13.2	13.0	10-8V13.20	1114.00	2 5/32	1B	J	4 1/2	4 31/32	148
14.0	13.8	10-8V14.00	1278.00	2 5/32	1B	J	4 1/2	4 31/32	160
15.0	14.8	10-8V15.00	1442.00	2 9/32	1B	M°	6 3/4	2 19/32	259
16.0	15.8	10-8V16.00	1608.00	2 9/32	1B	M°	6 3/4	2 19/32	296
17.0	16.8	10-8V17.00	1648.00	2 9/32	1W	M°	6 3/4	2 19/32	269
18.0	17.8	10-8V18.00	1720.00	2 9/32	1W	M°	6 3/4	2 19/32	282
19.0	18.8	10-8V19.00	1760.00	2 9/32	1W	M°	6 3/4	2 19/32	300
20.0	19.8	10-8V20.00	1860.00	2 9/32	1W	M°	6 3/4	2 19/32	318
21.2	21.0	10-8V21.20	2040.00	2 9/32	1W	M°	6 3/4	2 19/32	340
22.4	22.2	10-8V22.40	2246.00	3/16	1A	N°	8 1/8	3 5/16	410
24.8	24.6	10-8V24.80	2290.00	3/16	1A	N°	8 1/8	3 5/16	463
30.0	29.8	10-8V30.00	2350.00	3/16	1A	N°	8 1/8	3 5/16	557
35.5	35.3	10-8V35.50	2790.00	1/4	1A	P°	9 3/8	2	706
40.0	39.8	10-8V40.00	3350.00	1/4	1A	P°	9 3/8	2	817
44.5	44.3	10-8V44.50	4190.00	1/4	1A	P°	9 3/8	2	854
53.0	52.8	10-8V53.00	5000.00	1/4	1A	P°	9 3/8	2	1198
58.0	57.8	10-8V58.00	7000.00	3/8	2A	W°	11 3/8	1/8	1300
63.0	62.8	10-8V63.00	9000.00	3/8	2A	W°	11 3/8	1/8	1412
71.0	70.8	10-8V71.00	11500.00	3/8	2A	W°	11 3/8	1/8	1771



Tipo 1



Tipo 2

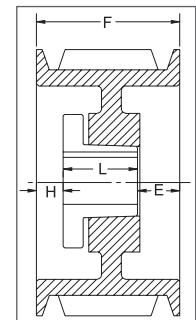
P.D. para correas "8V" = O.D.

°Nota: Los bujes M-N-P-W tienen un montaje estándar solamente con estas partes. Ver página 11 para las instrucciones de instalación.

SECCIÓN 8V

DIMENSIONES 12 RANURAS

O.D.	Dia. Datum	No. de parte	Precio de lista \$	F = 13 7/8 pulgadas					
				H	Tipo	B	L	E	Peso
12.5	12.3	12-8V12.50	2080.00	2 9/32	1B	M°	6 3/4	4 27/32	197
13.2	13.0	12-8V13.20	2120.00	2 9/32	1B	M°	6 3/4	4 27/32	219
14.0	13.8	12-8V14.00	2160.00	2 9/32	1B	M°	6 3/4	4 27/32	245
15.0	14.8	12-8V15.00	2200.00	2 9/32	1B	M°	6 3/4	4 27/32	280
16.0	15.8	12-8V16.00	2240.00	2 9/32	1B	M°	6 3/4	4 27/32	319
17.0	16.8	12-8V17.00	2280.00	2 9/32	1B	M°	6 3/4	4 27/32	321
18.0	17.8	12-8V18.00	2320.00	2 9/32	1B	M°	6 3/4	4 27/32	337
19.0	18.8	12-8V19.00	2400.00	3/16	1B	N°	8 1/8	5 9/16	380
20.0	19.8	12-8V20.00	2480.00	3/16	1W	N°	8 1/8	5 9/16	402
21.2	21.0	12-8V21.20	2560.00	3/16	1W	N°	8 1/8	5 9/16	420
22.4	22.2	12-8V22.40	2640.00	3/16	1A	N°	8 1/8	5 9/16	458
24.8	24.6	12-8V24.80	3000.00	3/16	1A	N°	8 1/8	5 9/16	516
30.0	29.8	12-8V30.00	3380.00	1/4	1A	P°	9 3/8	4 1/4	671
35.5	35.3	12-8V35.50	3660.00	1/4	1A	P°	9 3/8	4 1/4	798
40.0	39.8	12-8V40.00	5000.00	1/4	1A	P°	9 3/8	4 1/4	909
44.5	44.3	12-8V44.50	6500.00	1/4	1A	P°	9 3/8	4 1/4	982
53.0	52.8	12-8V53.00	8000.00	5/8	1A	W°	11 3/8	1 7/8	1456
58.0	57.8	12-8V58.00	9000.00	5/8	1A	W°	11 3/8	1 7/8	1500
63.0	62.8	12-8V63.00	10000.00	5/8	1A	W°	11 3/8	1 7/8	1540
71.0	70.8	12-8V71.00	13000.00	5/8	1A	W°	11 3/8	1 7/8	1912



Tipo 1

P.D. para correas "8V" = O.D.

°Nota: Los bujes M-N-P-W tienen un montaje estándar solamente con estas partes. Ver página 11 para las instrucciones de instalación.