

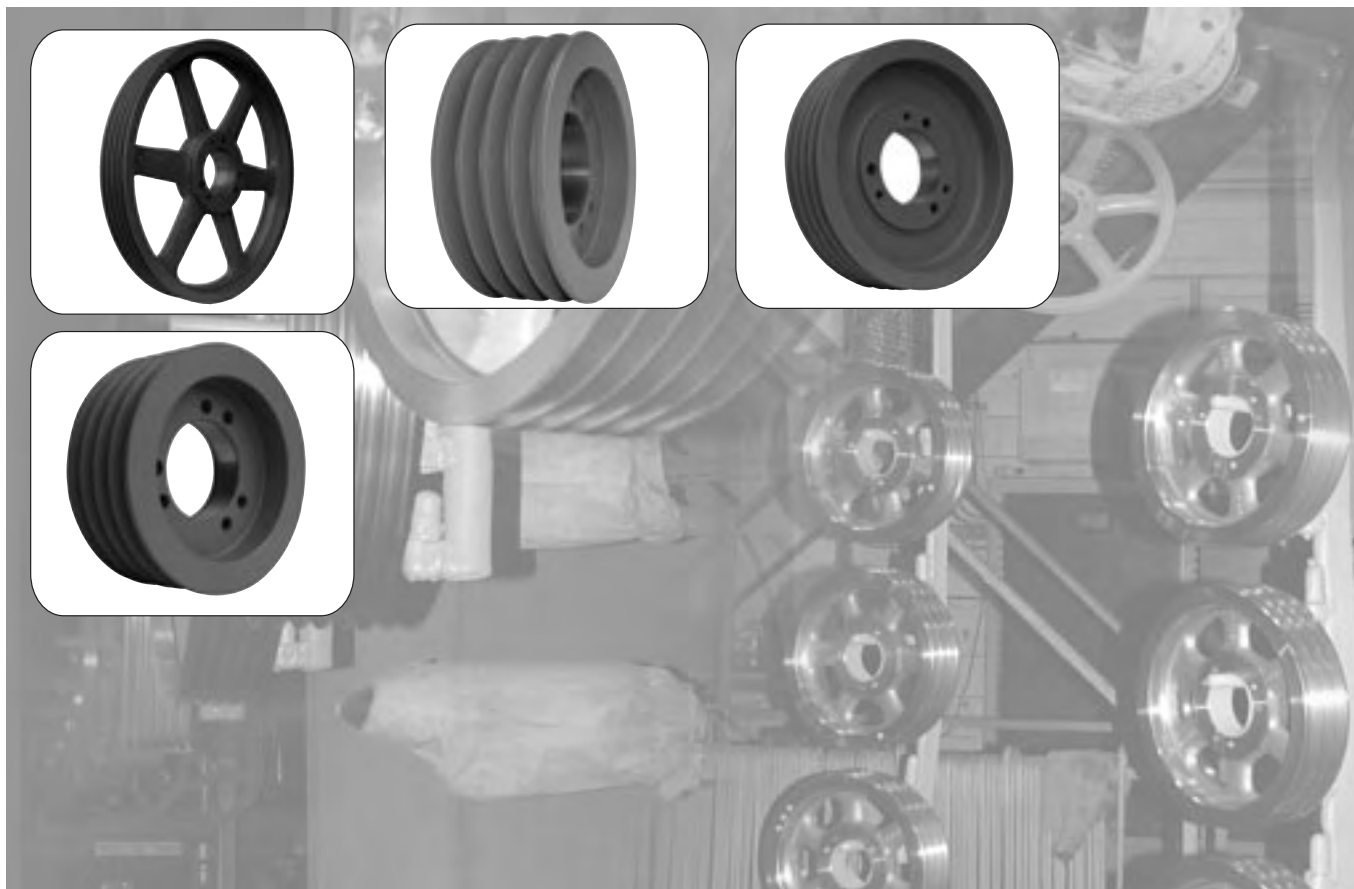
# CLÁSICAS, COMBINACIÓN A/B, C Y D

## SABÍA USTED QUE ...

- Línea completa en inventario, que incluye los modelos más grandes
- Diseñados para usarse con el buje QD y las correas correspondientes
- Modelos A/B desde 1-6; 8; 10 ranuras; 3,75" - 38,35"
- Modelo C desde 1-10; 12 ranuras; 5,4" - 58,6"
- Modelo D desde 3-10; 12 ranuras; 12,6" - 58,6"



POLEAS



## RECUERDO IMPORTANTE



• **NO DEBE USARSE** estas poleas de hierro fundido gris con velocidades tangenciales en exceso de 6500 pies por minuto. Note que las RPM máximas indicadas en la polea se basan en el límite de 6500 pies/min. Esto no toma en consideración la necesidad del balanceo dinámico (en dos planos). Favor referirse al cuadro en la página 32 para verificar la validez del balanceo dinámico en su aplicación.

Todos los productos PT funcionales cuando se usan en una transmisión son potencialmente peligrosos y deben ser protegidos por el usuario según las leyes, regulaciones y estándares aplicables, así como la buena práctica de seguridad. (Referirse al Estándar ANSI B15.1)

- Cuando se solicita el balanceo dinámico de una polea, debe especificar la velocidad de operación de la polea. Maska recomienda pedir el buje apropiado con la polea para asegurar un grado de balanceo del 6.3. Si no se ordena el buje al mismo tiempo, el cliente recibirá una renuncia de Maska que libera a Maska de cualquier problema posible de vibración relacionado con la transmisión.

## CÓMO PEDIR:

**EJEMPLO: 6B70**

**6**

**B**

**70**

**6:** NÚMERO DE RANURAS

**B:** COMBINACIÓN DE SECCIÓN DE POLEA "A/B"

**70:** DIÁMETRO DATUM PARA LAS CORREAS "B" (7,0")

## NOTAS:

- 1 Para ver las instrucciones de montaje con bujes QD, ver la página 11.
- 2 Todos Los cuadros: Se indica el tipo de construcción de la polea en la columna marcada <<T>>. El número se refiere al dibujo y la letra de la siguiente manera: A = radios (brazos); B = sólida; W = alma
- 3 La columna "B" indica el tamaño del buje correspondiente que se requiere.
- 4 Todas las dimensiones están a la fracción más cercana.

## COMBINACIÓN "A/B"

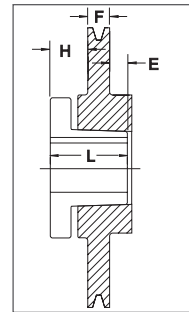
### DIMENSIONES 1 RANURA

Dia. Datum		O.D.	No. de parte	Precio de lista \$	F = 7/8 hasta un O.D. de 7,15 y 1 pulgada después de eso					
Correas A(4L)	Correas B(5L)				H	Tipo	B	L	E	Peso
3.0	3.4	3.75	<b>1B34<sup>1</sup></b>	<b>26.00</b>	5/8	11B	SH	1 1/4	1/4	1
3.2	3.6	3.95	<b>1B36</b>	<b>27.00</b>	1/2	6B	SH	1 1/4	1/8	1
3.4	3.8	4.15	<b>1B38</b>	<b>28.00</b>	1/2	6B	SH	1 1/4	1/8	2
3.6	4.0	4.35	<b>1B40</b>	<b>29.00</b>	1/2	6B	SH	1 1/4	1/8	2
3.8	4.2	4.55	<b>1B42</b>	<b>30.00</b>	1/2	6B	SH	1 1/4	1/8	2
4.0	4.4	4.75	<b>1B44</b>	<b>31.00</b>	1/2	6B	SH	1 1/4	1/8	2
4.2	4.6	4.95	<b>1B46</b>	<b>32.00</b>	7/16	7B	SDS	1 5/16	0	2
4.4	4.8	5.15	<b>1B48</b>	<b>33.00</b>	7/16	7B	SDS	1 5/16	0	3
4.6	5.0	5.35	<b>1B50</b>	<b>34.00</b>	7/16	7B	SDS	1 5/16	0	3
4.8	5.2	5.55	<b>1B52</b>	<b>35.00</b>	7/16	7B	SDS	1 5/16	0	3
5.0	5.4	5.75	<b>1B54</b>	<b>36.00</b>	7/16	7B	SDS	1 5/16	0	4
5.2	5.6	5.95	<b>1B56</b>	<b>37.00</b>	7/16	7B	SDS	1 5/16	0	4
5.4	5.8	6.15	<b>1B58</b>	<b>38.00</b>	7/16	7B	SDS	1 5/16	0	4
5.6	6.0	6.35	<b>1B60</b>	<b>40.00</b>	7/16	7B	SDS	1 5/16	0	5
5.8	6.2	6.55	<b>1B62</b>	<b>42.00</b>	7/16	7B	SDS	1 5/16	0	5
6.0	6.4	6.75	<b>1B64</b>	<b>44.00</b>	7/16	7B	SDS	1 5/16	0	6
6.2	6.6	6.95	<b>1B66</b>	<b>48.00</b>	7/16	7B	SDS	1 5/16	0	6
6.4	6.8	7.15	<b>1B68</b>	<b>50.00</b>	7/16	7B	SDS	1 5/16	0	6
6.6	7.0	7.35	<b>1B70</b>	<b>52.00</b>	9/16	6A	SDS	1 5/16	1/4	6
7.0	7.4	7.75	<b>1B74</b>	<b>56.00</b>	9/16	6A	SDS	1 5/16	1/4	6
7.6	8.0	8.35	<b>1B80</b>	<b>58.00</b>	9/16	6A	SDS	1 5/16	1/4	7
8.2	8.6	8.95	<b>1B86</b>	<b>62.00</b>	9/16	6A	SDS	1 5/16	1/4	8
8.6	9.0	9.35	<b>1B90</b>	<b>63.00</b>	9/16	6A	SDS	1 5/16	1/4	9
9.0	9.4	9.75	<b>1B94</b>	<b>64.00</b>	9/16	6A	SDS	1 5/16	1/4	9
10.6	11.0	11.35	<b>1B110</b>	<b>76.00</b>	9/16	6A	SDS	1 5/16	1/4	11
12.0	12.4	12.75	<b>1B124</b>	<b>90.00</b>	9/16	6A	SDS	1 5/16	1/4	12
13.2	13.6	13.95	<b>1B136</b>	<b>96.00</b>	9/16	6A	SDS	1 5/16	1/4	13
15.0	15.4	15.75	<b>1B154</b>	<b>116.00</b>	11/16	5A	SK	1 7/8	3/16	20
15.6	16.0	16.35	<b>1B160</b>	<b>136.00</b>	7/8	3A	SK	1 7/8	0	22
18.0	18.4	18.75	<b>1B184</b>	<b>156.00</b>	15/16	10A	SK	1 7/8	1/16	28
19.6	20.0	20.35	<b>1B200</b>	<b>230.00</b>	13/16	5A	SK	1 7/8	1/16	30
24.6	25.0	25.35	<b>1B250</b>	<b>350.00</b>	15/16	10A	SK	1 7/8	1/16	40

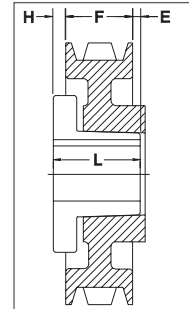
P.D. para correas "A" (4L) = Dia. Datum + 0,35" = O.D. - 0,40

P.D. para correas "B" (5L) = O.D.

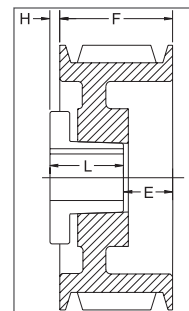
<sup>1</sup> Montaje inverso únicamente.



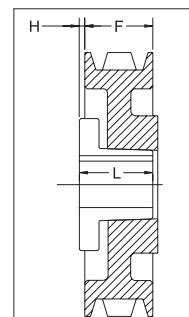
Tipo 3



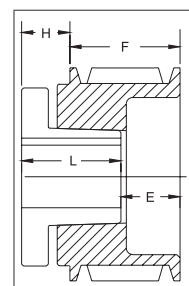
Tipo 5



Tipo 6



Tipo 7

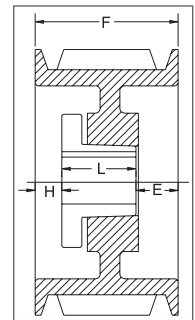


Tipo 10

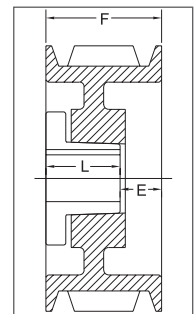
# COMBINACIÓN "A/B"

## DIMENSIONES 2 RANURAS

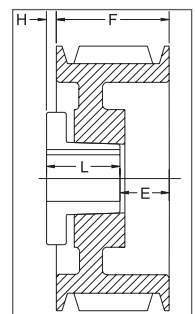
Dia. Datum		O.D.	No. de parte	Precio de lista \$	F = 1 3/4 pulgadas					Peso
Correas "A"	Correas "B"				H	Tipo	B	L	E	
3.0	3.4	3.75	2B34 <sup>1*</sup>	38.00	5/8	11B	SH	1 1/4	1 1/8	2
3.2	3.6	3.95	2B36 <sup>2</sup>	40.00	15/32	6B	SH	1 1/4	31/32	3
3.4	3.8	4.15	2B38 <sup>2</sup>	42.00	15/32	6B	SH	1 1/4	31/32	3
3.6	4.0	4.35	2B40 <sup>2</sup>	44.00	15/32	6B	SH	1 1/4	31/32	3
3.8	4.2	4.55	2B42 <sup>*</sup>	46.00	1/16	1B	SH	1 1/4	7/16	3
4.0	4.4	4.75	2B44	48.00	1/16	1B	SH	1 1/4	7/16	4
4.2	4.6	4.95	2B46 <sup>*</sup>	50.00	0	4B	SDS	1 5/16	7/16	4
4.4	4.8	5.15	2B48	52.00	0	4B	SDS	1 5/16	7/16	4
4.6	5.0	5.35	2B50	54.00	0	4B	SDS	1 5/16	7/16	5
4.8	5.2	5.55	2B52	56.00	0	4B	SDS	1 5/16	7/16	5
5.0	5.4	5.75	2B54	58.00	0	4B	SDS	1 5/16	7/16	6
5.2	5.6	5.95	2B56	60.00	0	4B	SDS	1 5/16	7/16	6
5.4	5.8	6.15	2B58	62.00	0	4W	SDS	1 5/16	7/16	6
5.6	6.0	6.35	2B60	64.00	0	4W	SDS	1 5/16	7/16	6
5.8	6.2	6.55	2B62	66.00	0	4W	SDS	1 5/16	7/16	7
6.0	6.4	6.75	2B64	68.00	0	4W	SDS	1 5/16	7/16	7
6.2	6.6	6.95	2B66	69.00	0	4W	SDS	1 5/16	7/16	8
6.4	6.8	7.15	2B68	71.00	0	4W	SDS	1 5/16	7/16	8
6.6	7.0	7.35	2B70	72.00	3/8	6W	SK	1 7/8	1/4	9
7.0	7.4	7.75	2B74	73.00	3/8	6W	SK	1 7/8	1/4	10
7.6	8.0	8.35	2B80	74.00	3/8	6W	SK	1 7/8	1/4	11
8.2	8.6	8.95	2B86	76.00	3/8	6A	SK	1 7/8	1/4	12
8.6	9.0	9.35	2B90	77.00	3/8	6A	SK	1 7/8	1/4	12
9.0	9.4	9.75	2B94	78.00	3/8	6A	SK	1 7/8	1/4	13
10.6	11.0	11.35	2B110	92.00	3/8	6A	SK	1 7/8	1/4	15
12.0	12.4	12.75	2B124	100.00	9/16	6A	SK	1 7/8	7/16	18
13.2	13.6	13.95	2B136	120.00	3/8	6A	SK	1 7/8	1/4	24
15.0	15.4	15.75	2B154	168.00	3/8	6A	SK	1 7/8	1/4	25
15.6	16.0	16.35	2B160	178.00	3/8	6A	SK	1 7/8	1/4	27.4
18.0	18.4	18.75	2B184	224.00	3/8	6A	SK	1 7/8	1/4	38
19.6	20.0	20.35	2B200	260.00	11/16	6A	SF	2	7/16	47
24.6	25.0	25.35	2B250	396.00	3/8	6A	SF	2	1/8	60
29.6	30.0	30.35	2B300	440.00	7/16	6A	SF	2	3/16	75
37.6	38.0	38.35	2B380	840.00	11/32	6A	SF	2	3/32	100



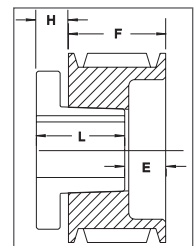
Tipo 1



Tipo 4



Tipo 6



Tipo 11

POLEAS

P.D. para correas "A" = Dia. Datum + 0,35" = O.D. - 0,40

P.D. para correas "B" = O.D.

<sup>1</sup> Montaje inverso únicamente.

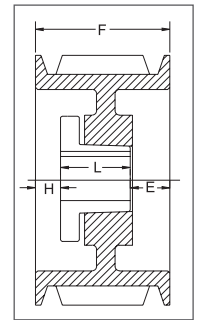
<sup>2</sup> Se puede montar esta polea únicamente a la inversa con los tornillos estándar del buje. Se requiere tornillos especiales (Maska no los suministra) para efectuar el montaje estándar. (ver página 11)

\* Tornillos para montaje suministrados por Maska con esta polea.

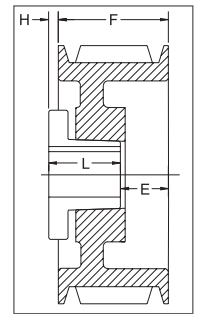
# COMBINACIÓN "A/B"

## DIMENSIONES 3 RANURAS

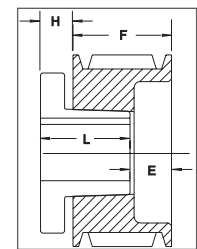
Dia. Datum		O.D.	No. de parte	Precio de lista \$	F = 2 1/2 pulgadas					Peso
Correas "A"	Correas "B"				H	Tipo	B	L	E	
3.0	3.4	3.75	<b>3B34*</b>	<b>44.00</b>	5/8	11B	SH	1 1/4	1 7/8	3
3.2	3.6	3.95	<b>3B36<sup>1</sup></b>	<b>46.00</b>	1/2	6B	SH	1 1/4	1 3/4	4
3.4	3.8	4.15	<b>3B38<sup>1</sup></b>	<b>48.00</b>	1/2	6B	SH	1 1/4	1 3/4	4
3.6	4.0	4.35	<b>3B40<sup>1</sup></b>	<b>50.00</b>	5/8	11B	SH	1 1/4	1 7/8	4
3.8	4.2	4.55	<b>3B42*</b>	<b>52.00</b>	7/16	1B	SH	1 1/4	13/16	4
4.0	4.4	4.75	<b>3B44</b>	<b>54.00</b>	7/16	1B	SH	1 1/4	13/16	5
4.2	4.6	4.95	<b>3B46*</b>	<b>56.00</b>	3/8	1B	SD	1 13/16	5/16	5
4.4	4.8	5.15	<b>3B48</b>	<b>58.00</b>	3/8	1B	SD	1 13/16	5/16	6
4.6	5.0	5.35	<b>3B50</b>	<b>60.00</b>	3/8	1B	SD	1 13/16	5/16	7
4.8	5.2	5.55	<b>3B52</b>	<b>62.00</b>	3/8	1B	SD	1 13/16	5/16	7
5.0	5.4	5.75	<b>3B54</b>	<b>64.00</b>	3/8	1B	SD	1 13/16	5/16	8
5.2	5.6	5.95	<b>3B56</b>	<b>66.00</b>	3/8	1B	SD	1 13/16	5/16	9
5.4	5.8	6.15	<b>3B58</b>	<b>68.00</b>	3/8	1W	SD	1 13/16	5/16	9
5.6	6.0	6.35	<b>3B60</b>	<b>70.00</b>	3/8	1W	SD	1 13/16	5/16	10
5.8	6.2	6.55	<b>3B62</b>	<b>72.00</b>	3/8	1W	SD	1 13/16	5/16	10
6.0	6.4	6.75	<b>3B64</b>	<b>76.00</b>	3/8	1W	SD	1 13/16	5/16	10
6.2	6.6	6.95	<b>3B66</b>	<b>78.00</b>	3/8	1W	SD	1 13/16	5/16	10
6.4	6.8	7.15	<b>3B68</b>	<b>80.00</b>	3/8	1W	SD	1 13/16	5/16	11
6.6	7.0	7.35	<b>3B70</b>	<b>82.00</b>	1/8	6W	SK	1 7/8	3/4	12
7.0	7.4	7.75	<b>3B74</b>	<b>84.00</b>	1/8	6W	SK	1 7/8	3/4	12
7.6	8.0	8.35	<b>3B80</b>	<b>88.00</b>	1/8	6W	SK	1 7/8	3/4	13
8.2	8.6	8.95	<b>3B86</b>	<b>96.00</b>	1/8	6A	SK	1 7/8	3/4	14
8.6	9.0	9.35	<b>3B90</b>	<b>100.00</b>	1/8	6A	SK	1 7/8	3/4	15
9.0	9.4	9.75	<b>3B94</b>	<b>104.00</b>	1/8	6A	SK	1 7/8	3/4	17
10.6	11.0	11.35	<b>3B110</b>	<b>124.00</b>	1/8	6A	SK	1 7/8	3/4	21
12.0	12.4	12.75	<b>3B124</b>	<b>144.00</b>	1/8	6A	SK	1 7/8	3/4	25
13.2	13.6	13.95	<b>3B136</b>	<b>156.00</b>	1/8	6A	SK	1 7/8	3/4	28
15.0	15.4	15.75	<b>3B154</b>	<b>200.00</b>	1/8	6A	SK	1 7/8	3/4	30
15.6	16.0	16.35	<b>3B160</b>	<b>212.00</b>	1/8	6A	SK	1 7/8	3/4	32
18.0	18.4	18.75	<b>3B184</b>	<b>244.00</b>	1/8	6A	SK	1 7/8	3/4	41
19.6	20.0	20.35	<b>3B200</b>	<b>324.00</b>	3/16	6A	SF	2	11/16	55.6
24.6	25.0	25.35	<b>3B250</b>	<b>440.00</b>	3/16	6A	SF	2	11/16	76.1
29.6	30.0	30.35	<b>3B300</b>	<b>500.00</b>	3/16	6A	SF	2	11/16	96
37.6	38.0	38.35	<b>3B380</b>	<b>880.00</b>	3/8	6A	E	2 5/8	1/4	145



Tipo 1



Tipo 6



Tipo 11



P.D. para correas "A" = Dia. Datum + 0,35" = O.D. - 0,40

P.D. para correas "B" = O.D.

<sup>1</sup> Montaje inverso únicamente.

\* Tornillos para montaje suministrados por Maska con esta polea.

# COMBINACIÓN "A/B"

## DIMENSIONES 4 RANURAS

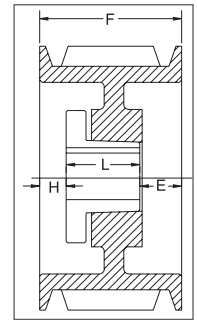
Dia. Datum		O.D.	No. de parte	Precio de lista \$	F = 3 1/4 pulgadas					
Correas "A"	Correas "B"				H	Tipo	B	L	E	Peso
3.0	3.4	3.75	<b>4B34*</b>	<b>64.00</b>	1	10B	SD	1 13/16	2 7/16	4
3.2	3.6	3.95	<b>4B36*</b>	<b>66.00</b>	1	10B	SD	1 13/16	2 7/16	5
3.4	3.8	4.15	<b>4B38*</b>	<b>68.00</b>	1	10B	SD	1 13/16	2 7/16	6
3.6	4.0	4.35	<b>4B40*</b>	<b>70.00</b>	11/16	11B	SD	1 13/16	2 1/8	5
3.8	4.2	4.55	<b>4B42*</b>	<b>72.00</b>	11/16	11B	SD	1 13/16	2 1/8	6
4.0	4.4	4.75	<b>4B44*</b>	<b>74.00</b>	11/16	11B	SD	1 13/16	2 1/8	6
4.2	4.6	4.95	<b>4B46*</b>	<b>76.00</b>	5/8	1B	SD	1 13/16	13/16	7
4.4	4.8	5.15	<b>4B48</b>	<b>78.00</b>	5/8	1B	SD	1 13/16	13/16	8
4.6	5.0	5.35	<b>4B50</b>	<b>80.00</b>	5/8	1B	SD	1 13/16	13/16	8
4.8	5.2	5.55	<b>4B52</b>	<b>82.00</b>	5/8	1B	SD	1 13/16	13/16	9
5.0	5.4	5.75	<b>4B54</b>	<b>84.00</b>	5/8	1B	SD	1 13/16	13/16	10
5.2	5.6	5.95	<b>4B56</b>	<b>86.00</b>	5/8	1B	SD	1 13/16	13/16	10
5.4	5.8	6.15	<b>4B58</b>	<b>88.00</b>	5/8	1W	SD	1 13/16	13/16	11
5.6	6.0	6.35	<b>4B60</b>	<b>90.00</b>	5/8	1W	SD	1 13/16	13/16	11
5.8	6.2	6.55	<b>4B62</b>	<b>92.00</b>	5/8	1W	SD	1 13/16	13/16	12
6.0	6.4	6.75	<b>4B64</b>	<b>96.00</b>	5/8	1W	SD	1 13/16	13/16	11
6.2	6.6	6.95	<b>4B66</b>	<b>100.00</b>	5/8	1W	SD	1 13/16	13/16	11
6.4	6.8	7.15	<b>4B68</b>	<b>104.00</b>	5/8	1W	SD	1 13/16	13/16	12
6.6	7.0	7.35	<b>4B70</b>	<b>108.00</b>	3/16	1W	SK	1 7/8	1 3/16	13
7.0	7.4	7.75	<b>4B74</b>	<b>112.00</b>	3/16	1W	SK	1 7/8	1 3/16	15
7.6	8.0	8.35	<b>4B80</b>	<b>116.00</b>	3/16	1W	SK	1 7/8	1 3/16	15
8.2	8.6	8.95	<b>4B86</b>	<b>124.00</b>	3/16	1A	SK	1 7/8	1 3/16	17
8.6	9.0	9.35	<b>4B90</b>	<b>131.00</b>	3/16	1A	SK	1 7/8	1 3/16	17
9.0	9.4	9.75	<b>4B94</b>	<b>138.00</b>	3/16	1A	SK	1 7/8	1 3/16	19
10.6	11.0	11.35	<b>4B110</b>	<b>152.00</b>	3/16	1A	SK	1 7/8	1 3/16	25
12.0	12.4	12.75	<b>4B124</b>	<b>170.00</b>	3/16	1A	SK	1 7/8	1 3/16	28
13.2	13.6	13.95	<b>4B136</b>	<b>204.00</b>	3/16	1A	SK	1 7/8	1 3/16	32
15.0	15.4	15.75	<b>4B154</b>	<b>224.00</b>	3/16	1A	SF	2	1 1/16	38
15.6	16.0	16.35	<b>4B160</b>	<b>244.00</b>	3/16	1A	SF	2	1 1/16	41
18.0	18.4	18.75	<b>4B184</b>	<b>260.00</b>	3/16	1A	SF	2	1 1/16	48
19.6	20.0	20.35	<b>4B200</b>	<b>364.00</b>	3/16	1A	SF	2	1 1/16	60
24.6	25.0	25.35	<b>4B250</b>	<b>480.00</b>	1/16	6A	E	2 5/8	11/16	93
29.6	30.0	30.35	<b>4B300</b>	<b>560.00</b>	1/16	6A	E	2 5/8	11/16	120
37.6	38.0	38.35	<b>4B380</b>	<b>980.00</b>	0	4A	E	2 5/8	5/8	162

P.D. para correas "A" = Dia. Datum + 0,35" = O.D. - 0,40

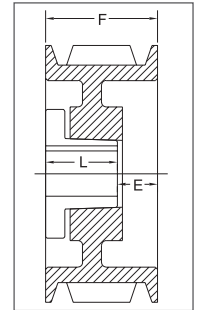
P.D. para correas "B" = O.D.

1 Montaje inverso únicamente.

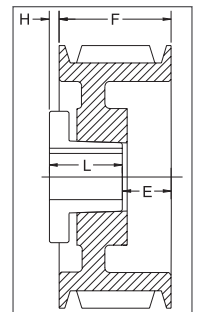
\* Tornillos para montaje suministrados por Maska con esta polea.



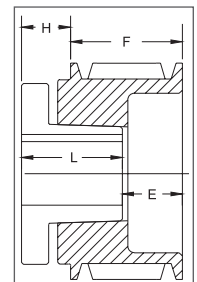
Tipo 1



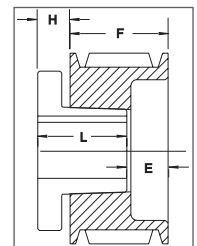
Tipo 4



Tipo 6



Tipo 10

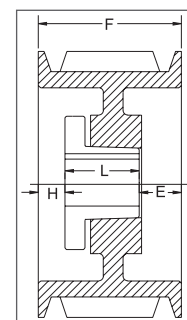


Tipo 11

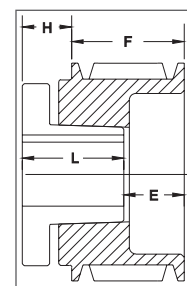
# COMBINACIÓN "A/B"

## DIMENSIONES 5 RANURAS

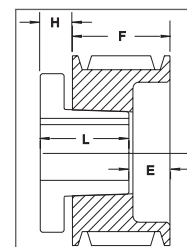
Dia. Datum		O.D.	No. de parte	Precio de lista \$	F = 4 pulgadas					
Correas "A"	Correas "B"				H	Tipo	B	L	E	Peso
3.0	3.4	3.75	5B34*	74.00	1	10B	SD	1 13/16	3 3/16	5
3.2	3.6	3.95	5B36*	76.00	1	10B	SD	1 13/16	3 3/16	6
3.4	3.8	4.15	5B38*	78.00	1	10B	SD	1 13/16	3 3/16	6
3.6	4.0	4.35	5B40*	80.00	11/16	11B	SD	1 13/16	2 7/8	6
3.8	4.2	4.55	5B42*	82.00	11/16	11B	SD	1 13/16	2 7/8	7
4.0	4.4	4.75	5B44*	84.00	11/16	11B	SD	1 13/16	2 7/8	7
4.2	4.6	4.95	5B46*	86.00	5/8	1B	SD	1 13/16	1 9/16	7
4.4	4.8	5.15	5B48	90.00	5/8	1B	SD	1 13/16	1 9/16	9
4.6	5.0	5.35	5B50	92.00	5/8	1B	SD	1 13/16	1 9/16	10
4.8	5.2	5.55	5B52	94.00	5/8	1B	SD	1 13/16	1 9/16	10
5.0	5.4	5.75	5B54	96.00	1/2	1B	SK	1 7/8	1 5/8	10
5.2	5.6	5.95	5B56	98.00	1/2	1B	SK	1 7/8	1 5/8	11
5.4	5.8	6.15	5B58	100.00	1/2	1B	SK	1 7/8	1 5/8	12
5.6	6.0	6.35	5B60	106.00	1/2	1B	SK	1 7/8	1 5/8	12
5.8	6.2	6.55	5B62	110.00	1/2	1B	SK	1 7/8	1 5/8	14
6.0	6.4	6.75	5B64	116.00	1/2	1B	SK	1 7/8	1 5/8	14
6.2	6.6	6.95	5B66	120.00	1/2	1B	SK	1 7/8	1 5/8	15
6.4	6.8	7.15	5B68	124.00	1/2	1B	SK	1 7/8	1 5/8	16
6.6	7.0	7.35	5B70	132.00	1/2	1B	SF	2	1 1/2	16
7.0	7.4	7.75	5B74	150.00	1/2	1B	SF	2	1 1/2	18
7.6	8.0	8.35	5B80	154.00	1/2	1W	SF	2	1 1/2	19
8.2	8.6	8.95	5B86	164.00	1/2	1W	SF	2	1 1/2	21
8.6	9.0	9.35	5B90	168.00	1/2	1A	SF	2	1 1/2	21
9.0	9.4	9.75	5B94	172.00	1/2	1A	SF	2	1 1/2	22
10.6	11.0	11.35	5B110	194.00	1/2	1A	SF	2	1 1/2	29
12.0	12.4	12.75	5B124	208.00	1/2	1A	SF	2	1 1/2	33
13.2	13.6	13.95	5B136	240.00	1/2	1A	SF	2	1 1/2	39
15.0	15.4	15.75	5B154	268.00	1/2	1A	SF	2	1 1/2	43
15.6	16.0	16.35	5B160	294.00	1/2	1A	SF	2	1 1/2	46
18.0	18.4	18.75	5B184	316.00	1/2	1A	SF	2	1 1/2	54
19.6	20.0	20.35	5B200	390.00	3/16	1A	E	2 5/8	1 3/16	77.5
24.6	25.0	25.35	5B250	500.00	3/16	1A	E	2 5/8	1 3/16	108
29.6	30.0	30.35	5B300	696.00	3/16	1A	E	2 5/8	1 3/16	131
37.6	38.0	38.35	5B380	1080.00	3/16	1A	E	2 5/8	1 3/16	169



Tipo 1



Tipo 10



Tipo 11

P.D. para correas "A" = Dia. Datum + 0,35" = O.D. - 0,40

P.D. para correas "B" = O.D.

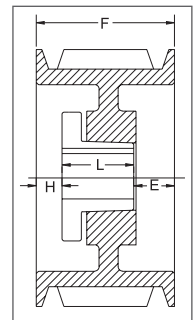
<sup>1</sup> Montaje inverso únicamente.

\* Tornillos para montaje suministrados por Maska con esta polea.

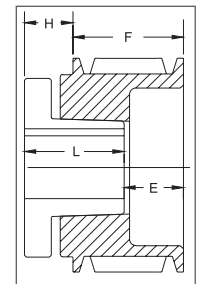
# COMBINACIÓN "A/B"

## DIMENSIONES 6 RANURAS

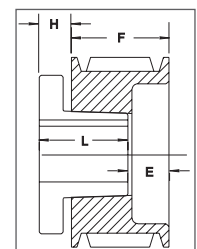
Dia. Datum		O.D.	No. de parte	Precio de lista \$	F = 4 3/4 pulgadas					Peso
Correas "A"	Correas "B"				H	Tipo	B	L	E	
3.0	3.4	3.75	<b>6B34<sup>1*</sup></b>	<b>98.00</b>	1 3/32	10B	SD	1 13/16	4 1/32	6
3.2	3.6	3.95	<b>6B36<sup>1*</sup></b>	<b>100.00</b>	1 3/32	10B	SD	1 13/16	4 1/32	7
3.4	3.8	4.15	<b>6B38<sup>1*</sup></b>	<b>102.00</b>	1 3/32	10B	SD	1 13/16	4 1/32	7
3.6	4.0	4.35	<b>6B40<sup>1*</sup></b>	<b>104.00</b>	11/16	11B	SD	1 13/16	3 5/8	7
3.8	4.2	4.55	<b>6B42<sup>1*</sup></b>	<b>106.00</b>	11/16	11B	SD	1 13/16	3 5/8	8
4.0	4.4	4.75	<b>6B44<sup>1*</sup></b>	<b>110.00</b>	11/16	11B	SD	1 13/16	3 5/8	9
4.2	4.6	4.95	<b>6B46<sup>*</sup></b>	<b>112.00</b>	5/8	1B	SD	1 13/16	2 5/16	9
4.4	4.8	5.15	<b>6B48</b>	<b>114.00</b>	5/8	1B	SD	1 13/16	2 5/16	10
4.6	5.0	5.35	<b>6B50</b>	<b>116.00</b>	5/8	1B	SD	1 13/16	2 5/16	11
4.8	5.2	5.55	<b>6B52</b>	<b>118.00</b>	5/8	1B	SD	1 13/16	2 5/16	11
5.0	5.4	5.75	<b>6B54</b>	<b>120.00</b>	1/2	1B	SK	1 7/8	2 3/8	11
5.2	5.6	5.95	<b>6B56</b>	<b>122.00</b>	1/2	1B	SK	1 7/8	2 3/8	13.4
5.4	5.8	6.15	<b>6B58</b>	<b>124.00</b>	1/2	1B	SK	1 7/8	2 3/8	15.5
5.6	6.0	6.35	<b>6B60</b>	<b>126.00</b>	1/2	1B	SK	1 7/8	2 3/8	15
5.8	6.2	6.55	<b>6B62</b>	<b>130.00</b>	1/2	1B	SK	1 7/8	2 3/8	15
6.0	6.4	6.75	<b>6B64</b>	<b>134.00</b>	1/2	1B	SK	1 7/8	2 3/8	16
6.2	6.6	6.95	<b>6B66</b>	<b>138.00</b>	1/2	1B	SK	1 7/8	2 3/8	17
6.4	6.8	7.15	<b>6B68</b>	<b>142.00</b>	1/2	1B	SK	1 7/8	2 3/8	18
6.6	7.0	7.35	<b>6B70</b>	<b>150.00</b>	7/8	1B	SF	2	1 7/8	19
7.0	7.4	7.75	<b>6B74</b>	<b>204.00</b>	7/8	1B	SF	2	1 7/8	20
7.6	8.0	8.35	<b>6B80</b>	<b>208.00</b>	7/8	1W	SF	2	1 7/8	24
8.2	8.6	8.95	<b>6B86</b>	<b>220.00</b>	7/8	1W	SF	2	1 7/8	26
9.0	9.4	9.75	<b>6B94</b>	<b>230.00</b>	7/8	1W	SF	2	1 7/8	30
10.6	11.0	11.35	<b>6B110</b>	<b>248.00</b>	7/8	1A	SF	2	1 7/8	30
12.0	12.4	12.75	<b>6B124</b>	<b>276.00</b>	7/8	1A	SF	2	1 7/8	37
13.2	13.6	13.95	<b>6B136</b>	<b>280.00</b>	1 3/32	1A	SF	2	1 21/32	39
15.0	15.4	15.75	<b>6B154</b>	<b>300.00</b>	1 3/32	1A	SF	2	1 21/32	51.4
15.6	16.0	16.35	<b>6B160</b>	<b>328.00</b>	7/8	1A	SF	2	1 7/8	54.6
18.0	18.4	18.75	<b>6B184</b>	<b>348.00</b>	1 3/32	1A	SF	2	1 21/32	59
19.6	20.0	20.35	<b>6B200</b>	<b>464.00</b>	3/16	1A	E	2 5/8	1 15/16	96.9
24.6	25.0	25.35	<b>6B250</b>	<b>580.00</b>	5/16	1A	E	2 5/8	1 13/16	120
29.6	30.0	30.35	<b>6B300</b>	<b>780.00</b>	5/16	1A	E	2 5/8	1 13/16	151
37.6	38.0	38.35	<b>6B380</b>	<b>1120.00</b>	5/16	1A	E	2 5/8	1 13/16	157



Tipo 1



Tipo 10



Tipo 11

POLEAS

P.D. para correas "A" = Dia. Datum + 0,35" = O.D. - 0,40

P.D. para correas "B" = O.D.

<sup>1</sup> Montaje inverso únicamente.

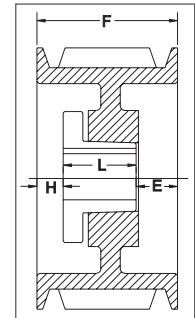
\* Tornillos para montaje suministrados por Maska con esta polea.

# COMBINACIÓN "A/B"

## DIMENSIONES 8 RANURAS

POLEAS

Dia. Datum		O.D.	No. de parte	Precio de lista \$	F = 6 1/4 pulgadas					
Correas "A"	Correas "B"				H	Tipo	B	L	E	Peso
3.0	3.4	3.75	-	-	-	-	-	-	-	-
3.2	3.6	3.95	-	-	-	-	-	-	-	-
3.4	3.8	4.15	-	-	-	-	-	-	-	-
3.6	4.0	4.35	-	-	-	-	-	-	-	-
3.8	4.2	4.55	-	-	-	-	-	-	-	-
4.0	4.4	4.75	-	-	-	-	-	-	-	-
4.2	4.6	4.95	-	-	-	-	-	-	-	-
4.4	4.8	5.15	-	-	-	-	-	-	-	-
4.6	5.0	5.35	-	-	-	-	-	-	-	-
4.8	5.2	5.55	-	-	-	-	-	-	-	-
5.0	5.4	5.75	<b>8B54</b>	<b>180.00</b>	1	1B	SK	1 7/8	3 3/8	15
5.2	5.6	5.95	<b>8B56</b>	<b>184.00</b>	1	1B	SK	1 7/8	3 3/8	17
5.4	5.8	6.15	<b>8B58</b>	<b>188.00</b>	1	1B	SK	1 7/8	3 3/8	16
5.6	6.0	6.35	<b>8B60</b>	<b>192.00</b>	1	1B	SF	2	3 1/4	16
5.8	6.2	6.55	<b>8B62</b>	<b>196.00</b>	1	1B	SF	2	3 1/4	18
6.0	6.4	6.75	<b>8B64</b>	<b>200.00</b>	1	1B	SF	2	3 1/4	19
6.2	6.6	6.95	<b>8B66</b>	<b>208.00</b>	1	1B	SF	2	3 1/4	20
6.4	6.8	7.15	<b>8B68</b>	<b>212.00</b>	1	1B	SF	2	3 1/4	21
6.6	7.0	7.35	<b>8B70</b>	<b>260.00</b>	1	1B	SF	2	3 1/4	22
7.0	7.4	7.75	<b>8B74</b>	<b>284.00</b>	1	1B	SF	2	3 1/4	25
7.6	8.0	8.35	<b>8B80</b>	<b>288.00</b>	1 5/16	1B	E	2 5/8	2 5/16	29
8.2	8.6	8.95	<b>8B86</b>	<b>292.00</b>	1 5/16	1B	E	2 5/8	2 5/16	33
9.0	9.4	9.75	<b>8B94</b>	<b>300.00</b>	1 5/16	1B	E	2 5/8	2 5/16	36
10.6	11.0	11.35	<b>8B110</b>	<b>356.00</b>	1 5/16	1B	E	2 5/8	2 5/16	46
12.0	12.4	12.75	<b>8B124</b>	<b>372.00</b>	1 5/16	1W	E	2 5/8	2 5/16	53
13.2	13.6	13.95	<b>8B136</b>	<b>452.00</b>	1 3/8	1A	E	2 5/8	2 1/4	59
15.0	15.4	15.75	<b>8B154</b>	<b>500.00</b>	1 3/8	1A	E	2 5/8	2 1/4	69
15.6	16.0	16.35	<b>8B160</b>	<b>572.00</b>	1 5/16	1A	E	2 5/8	2 5/16	71
18.0	18.4	18.75	<b>8B184</b>	<b>636.00</b>	3/32	1A	F	3 5/8	2 17/32	108
19.6	20.0	20.35	<b>8B200</b>	<b>690.00</b>	3/32	1A	F	3 5/8	2 17/32	114
24.6	25.0	25.35	<b>8B250</b>	<b>880.00</b>	3/32	1A	F	3 5/8	2 17/32	152
29.6	30.0	30.35	<b>8B300</b>	<b>1260.00</b>	3/32	1A	F	3 5/8	2 17/32	186
37.6	38.0	38.35	<b>8B380</b>	<b>1740.00</b>	3/32	1A	F	3 5/8	2 17/32	220



Tipo 1

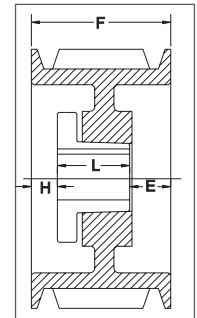
P.D. para correas "A" = Dia. Datum + 0,35" = O.D. - 0,40

P.D. para correas "B" = O.D.

# COMBINACIÓN "A/B"

## DIMENSIONES 10 RANURAS

Dia. Datum		O.D.	No. de parte	Precio de lista \$	F = 7 3/4 pulgadas					Peso
Correas "A"	Correas "B"				H	Tipo	B	L	E	
3.0	3.4	3.75	-	-	-	-	-	-	-	-
3.2	3.6	3.95	-	-	-	-	-	-	-	-
3.4	3.8	4.15	-	-	-	-	-	-	-	-
3.6	4.0	4.35	-	-	-	-	-	-	-	-
3.8	4.2	4.55	-	-	-	-	-	-	-	-
4.0	4.4	4.75	-	-	-	-	-	-	-	-
4.2	4.6	4.95	-	-	-	-	-	-	-	-
4.4	4.8	5.15	-	-	-	-	-	-	-	-
4.6	5.0	5.35	-	-	-	-	-	-	-	-
4.8	5.2	5.55	-	-	-	-	-	-	-	-
5.0	5.4	5.75	<b>10B54</b>	<b>280.00</b>	1 3/4	1B	SK	1 7/8	4 1/8	16
5.2	5.6	5.95	<b>10B56</b>	<b>288.00</b>	1 3/4	1B	SK	1 7/8	4 1/8	17
5.4	5.8	6.15	<b>10B58</b>	<b>296.00</b>	1 3/4	1B	SK	1 7/8	4 1/8	18
5.6	6.0	6.35	<b>10B60</b>	<b>304.00</b>	1 3/4	1B	SF	2	4	19
5.8	6.2	6.55	<b>10B62</b>	<b>312.00</b>	1 3/4	1B	SF	2	4	20
6.0	6.4	6.75	<b>10B64</b>	<b>320.00</b>	1 3/4	1B	SF	2	4	21
6.2	6.6	6.95	<b>10B66</b>	<b>332.00</b>	1 3/4	1B	SF	2	4	21
6.4	6.8	7.15	<b>10B68</b>	<b>344.00</b>	1 3/4	1B	SF	2	4	22
6.6	7.0	7.35	<b>10B70</b>	<b>352.00</b>	1 3/4	1B	SF	2	4	23
7.0	7.4	7.75	<b>10B74</b>	<b>360.00</b>	1 3/4	1B	SF	2	4	24
7.6	8.0	8.35	-	-	-	-	-	-	-	-
8.2	8.6	8.95	<b>10B86</b>	<b>372.00</b>	2 1/16	1B	E	2 5/8	3 1/16	39.6
9.0	9.4	9.75	<b>10B94</b>	<b>420.00</b>	2 1/16	1B	E	2 5/8	3 1/16	40
10.6	11.0	11.35	<b>10B110</b>	<b>520.00</b>	2 1/16	1B	E	2 5/8	3 1/16	52
12.0	12.4	12.75	<b>10B124</b>	<b>532.00</b>	2 1/16	1W	E	2 5/8	3 1/16	58
13.2	13.6	13.95	<b>10B136</b>	<b>636.00</b>	27/32	1A	F	3 5/8	3 9/32	73
15.0	15.4	15.75	<b>10B154</b>	<b>680.00</b>	27/32	1A	F	3 5/8	3 9/32	87
15.6	16.0	16.35	<b>10B160</b>	<b>760.00</b>	27/32	1A	F	3 5/8	3 9/32	100
18.0	18.4	18.75	<b>10B184</b>	<b>800.00</b>	27/32	1A	F	3 5/8	3 9/32	110
19.6	20.0	20.35	<b>10B200</b>	<b>860.00</b>	27/32	1A	F	3 5/8	3 9/32	120
24.6	25.0	25.35	<b>10B250</b>	<b>1160.00</b>	27/32	1A	F	3 5/8	3 9/32	148
29.6	30.0	30.35	<b>10B300</b>	<b>1380.00</b>	27/32	1A	F	3 5/8	3 9/32	190
37.6	38.0	38.35	<b>10B380</b>	<b>1780.00</b>	7/32	1A	J	4 1/2	3 1/32	260



Tipo 1

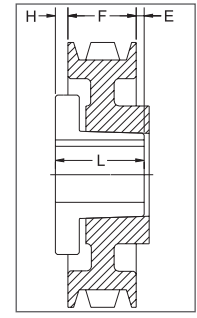
P.D. para correas "A" = Dia. Datum + 0,35" = O.D. - 0,40

P.D. para correas "B" = O.D.

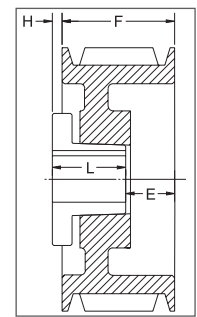
# SECCIÓN "C"

## DIMENSIONES 1 RANURA

Dia. Datum	O.D.	No. de parte	Precio de lista \$	F = 1 3/8 pulgadas					Peso
				H	Tipo	B	L	E	
5.0	5.4	-	-	-	-	-	-	-	-
6.0	6.4	-	-	-	-	-	-	-	-
7.0	7.4	<b>1C70</b>	<b>112.00</b>	9/16	5B	SF	2	1/16	10
7.5	7.9	<b>1C75</b>	<b>120.00</b>	9/16	5B	SF	2	1/16	11
8.0	8.4	<b>1C80</b>	<b>124.00</b>	9/16	5B	SF	2	1/16	13.2
8.5	8.9	<b>1C85</b>	<b>128.00</b>	9/16	5B	SF	2	1/16	15.6
9.0	9.4	<b>1C90</b>	<b>132.00</b>	19/32	5W	SF	2	1/32	13
9.5	9.9	<b>1C95</b>	<b>136.00</b>	19/32	5W	SF	2	1/32	18
10.0	10.4	<b>1C100</b>	<b>140.00</b>	11/16	6W	SF	2	1/16	14
10.5	10.9	<b>1C105</b>	<b>152.00</b>	11/16	6W	SF	2	1/16	20
11.0	11.4	<b>1C110</b>	<b>172.00</b>	17/32	5W	SF	2	3/32	15
12.0	12.4	<b>1C120</b>	<b>184.00</b>	11/16	6W	SF	2	1/16	16
13.0	13.4	<b>1C130</b>	<b>240.00</b>	11/16	6A	SF	2	1/16	18
14.0	14.4	<b>1C140</b>	<b>260.00</b>	11/16	6A	SF	2	1/16	20
16.0	16.4	<b>1C160</b>	<b>280.00</b>	11/16	6A	SF	2	1/16	24
18.0	18.4	<b>1C180</b>	<b>300.00</b>	11/16	6A	SF	2	1/16	32
20.0	20.4	<b>1C200</b>	<b>320.00</b>	11/16	6A	SF	2	1/16	35
24.0	24.4	<b>1C240</b>	<b>360.00</b>	11/16	6A	SF	2	1/16	46.9
27.0	27.4	-	-	-	-	-	-	-	-
30.0	30.4	-	-	-	-	-	-	-	-
36.0	36.4	-	-	-	-	-	-	-	-
44.0	44.4	-	-	-	-	-	-	-	-
50.0	50.4	-	-	-	-	-	-	-	-



Tipo 5



Tipo 6

P.D. para correas "C" = O.D.

POLEAS

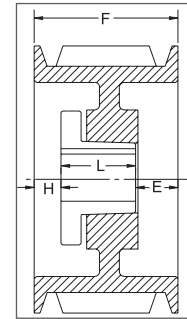


# SECCIÓN "C"

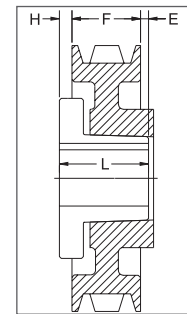
## DIMENSIONES 2 RANURAS

Dia. Datum	O.D.	No. de parte	Precio de lista \$	F = 2 3/8 pulgadas					Peso
				H	Tipo	B	L	E	
5.0	5.4	-	-	-	-	-	-	-	-
6.0	6.4	<b>2C60</b>	<b>126.00</b>	1/16	1B	SF	2	5/16	11
7.0	7.4	<b>2C70</b>	<b>132.00</b>	0	1B	SF	2	3/8	13
7.5	7.9	<b>2C75</b>	<b>136.00</b>	0	1B	SF	2	3/8	15
8.0	8.4	<b>2C80</b>	<b>144.00</b>	0	1B	SF	2	3/8	17
8.5	8.9	<b>2C85</b>	<b>148.00</b>	0	1B	SF	2	3/8	19
9.0	9.4	<b>2C90</b>	<b>152.00</b>	0	1W	SF	2	3/8	21
9.5	9.9	<b>2C95</b>	<b>160.00</b>	0	1W	SF	2	3/8	22
10.0	10.4	<b>2C100</b>	<b>176.00</b>	0	1W	SF	2	3/8	21.8
10.5	10.9	<b>2C105</b>	<b>188.00</b>	0	1W	SF	2	3/8	23
11.0	11.4	<b>2C110</b>	<b>200.00</b>	0	1W	SF	2	3/8	26
12.0	12.4	<b>2C120</b>	<b>210.00</b>	1/4	6W	SF	2	5/8	37
13.0	13.4	<b>2C130</b>	<b>250.00</b>	1/4	6A	SF	2	5/8	35
14.0	14.4	<b>2C140</b>	<b>270.00</b>	1/4	6A	SF	2	5/8	40
16.0	16.4	<b>2C160</b>	<b>290.00</b>	1/4	6A	SF	2	5/8	40
18.0	18.4	<b>2C180</b>	<b>310.00</b>	1/4	6A	SF	2	5/8	50
20.0	20.4	<b>2C200</b>	<b>340.00</b>	1/4	6A	SF	2	5/8	55
24.0	24.4	<b>2C240</b>	<b>460.00</b>	1/4	6A	SF	2	5/8	73.1
27.0	27.4	<b>2C270</b>	<b>550.00</b>	29/32	5A	F	3 5/8	11/32	94
30.0	30.4	<b>2C300</b>	<b>620.00</b>	29/32	5A	F	3 5/8	11/32	104
36.0	36.4	-	-	-	-	-	-	-	-
44.0	44.4	-	-	-	-	-	-	-	-
50.0	50.4	-	-	-	-	-	-	-	-

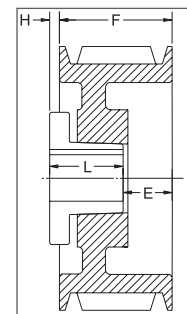
P.D. para correas "C" = O.D.



Tipo 1



Tipo 5

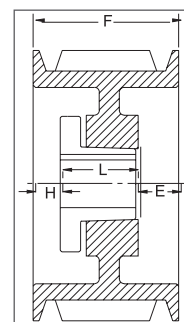


Tipo 6

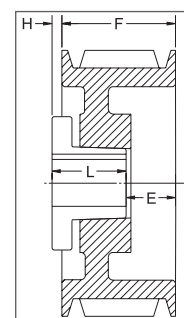
# SECCIÓN "C"

## DIMENSIONES 3 RANURAS

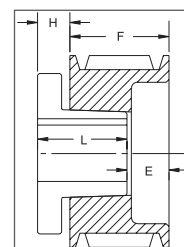
Dia. Datum	O.D.	No. de parte	Precio de lista \$	F = 3 3/8 pulgadas					Peso
				H	Tipo	B	L	E	
5.0	5.4	<b>3C50*</b>	<b>136.00</b>	5/16	1B	SD	1 13/16	1 1/4	9
5.0	5.4	<b>3C50SK<sup>1</sup></b>	<b>136.00</b>	13/16	11B	SK	1 7/8	2 5/16	10.5
5.6	6.0	<b>3C56</b>	<b>138.00</b>	5/8	1B	SD	1 13/16	15/16	10
6.0	6.4	<b>3C60</b>	<b>140.00</b>	1/16	1B	SF	2	1 5/16	11.3
7.0	7.4	<b>3C70</b>	<b>144.00</b>	1/2	1B	SF	2	7/8	16
7.5	7.9	<b>3C75</b>	<b>148.00</b>	1/2	1B	SF	2	7/8	18
8.0	8.4	<b>3C80</b>	<b>156.00</b>	11/16	1B	E	2 5/8	1/16	21
8.5	8.9	<b>3C85</b>	<b>176.00</b>	11/16	1B	E	2 5/8	1/16	24
9.0	9.4	<b>3C90</b>	<b>188.00</b>	11/16	1B	E	2 5/8	1/16	26
9.5	9.9	<b>3C95</b>	<b>200.00</b>	11/16	1W	E	2 5/8	1/16	29.8
10.0	10.4	<b>3C100</b>	<b>220.00</b>	11/16	1W	E	2 5/8	1/16	34
10.5	10.9	<b>3C105</b>	<b>230.00</b>	11/16	1W	E	2 5/8	1/16	37
11.0	11.4	<b>3C110</b>	<b>240.00</b>	11/16	1W	E	2 5/8	1/16	39
12.0	12.4	<b>3C120</b>	<b>250.00</b>	11/16	1W	E	2 5/8	1/16	43.4
13.0	13.4	<b>3C130</b>	<b>290.00</b>	11/16	1A	E	2 5/8	1/16	45
14.0	14.4	<b>3C140</b>	<b>320.00</b>	11/16	1A	E	2 5/8	1/16	50
16.0	16.4	<b>3C160</b>	<b>330.00</b>	11/16	1A	E	2 5/8	1/16	60
18.0	18.4	<b>3C180</b>	<b>350.00</b>	11/16	1A	E	2 5/8	1/16	63
20.0	20.4	<b>3C200</b>	<b>400.00</b>	1/16	6A	E	2 5/8	13/16	81
24.0	24.4	<b>3C240</b>	<b>480.00</b>	1/16	6A	E	2 5/8	13/16	94.7
27.0	27.4	<b>3C270</b>	<b>580.00</b>	13/32	6A	F	3 5/8	5/32	116
30.0	30.4	<b>3C300</b>	<b>640.00</b>	13/32	6A	F	3 5/8	5/32	134.4
36.0	36.4	<b>3C360</b>	<b>980.00</b>	13/32	6A	F	3 5/8	5/32	159
44.0	44.4	<b>3C440</b>	<b>1720.00</b>	13/32	6A	F	3 5/8	5/32	190
50.0	50.4	<b>3C500</b>	<b>1920.00</b>	13/32	6A	F	3 5/8	5/32	250



Tipo 1



Tipo 6



Tipo 11

P.D. para correas "C" = O.D.

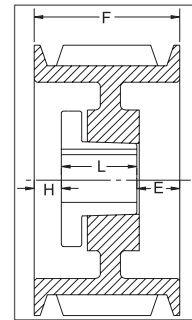
<sup>1</sup> Montaje inverso únicamente.

\* Tornillos para montaje suministrados por Maska con esta polea.

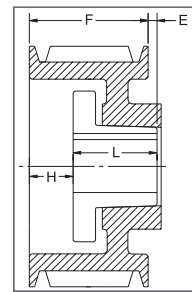
# SECCIÓN "C"

## DIMENSIONES 4 RANURAS

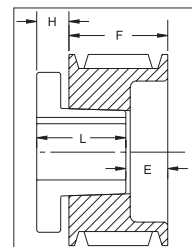
Dia. Datum	O.D.	No. de parte	Precio de lista \$	F = 4 3/8 pulgadas					
				H	Tipo	B	L	E	Peso
5.0	5.4	<b>4C50*</b>	<b>156.00</b>	5/8	1B	SD	1 13/16	1 15/16	10.2
5.0	5.4	<b>4C50SK<sup>1</sup></b>	<b>156.00</b>	13/16	11B	SK	1 7/8	3 5/16	12.0
5.6	6.0	<b>4C56</b>	<b>158.00</b>	7/8	1B	SD	1 13/16	1 11/16	13.0
6.0	6.4	<b>4C60</b>	<b>160.00</b>	1/16	1B	SF	2	2 5/16	15.0
7.0	7.4	<b>4C70</b>	<b>164.00</b>	3/4	1B	SF	2	1 5/8	19.0
7.5	7.9	<b>4C75</b>	<b>172.00</b>	3/4	1B	SF	2	1 5/8	22.0
8.0	8.4	<b>4C80</b>	<b>196.00</b>	15/16	1B	E	2 5/8	13/16	24.0
8.5	8.9	<b>4C85</b>	<b>208.00</b>	15/16	1B	E	2 5/8	13/16	28.0
9.0	9.4	<b>4C90</b>	<b>224.00</b>	15/16	1B	E	2 5/8	13/16	31.0
9.5	9.9	<b>4C95</b>	<b>228.00</b>	15/16	1B	E	2 5/8	13/16	34.8
10.0	10.4	<b>4C100</b>	<b>240.00</b>	15/16	1B	E	2 5/8	13/16	40.0
10.5	10.9	<b>4C105</b>	<b>260.00</b>	15/16	1W	E	2 5/8	13/16	43.0
11.0	11.4	<b>4C110</b>	<b>272.00</b>	15/16	1W	E	2 5/8	13/16	44.0
12.0	12.4	<b>4C120</b>	<b>300.00</b>	15/16	1W	E	2 5/8	13/16	50.0
13.0	13.4	<b>4C130</b>	<b>336.00</b>	15/16	1A	E	2 5/8	13/16	52.0
14.0	14.4	<b>4C140</b>	<b>364.00</b>	15/16	1A	E	2 5/8	13/16	57.0
16.0	16.4	<b>4C160</b>	<b>420.00</b>	15/16	1A	E	2 5/8	13/16	67.0
18.0	18.4	<b>4C180</b>	<b>430.00</b>	15/16	1A	E	2 5/8	13/16	72.0
20.0	20.4	<b>4C200</b>	<b>450.00</b>	7/16	1A	E	2 5/8	1 5/16	86.0
24.0	24.4	<b>4C240</b>	<b>560.00</b>	3/32	1A	F	3 5/8	21/32	113.0
27.0	27.4	<b>4C270</b>	<b>660.00</b>	3/32	1A	F	3 5/8	21/32	140.0
30.0	30.4	<b>4C300</b>	<b>760.00</b>	3/32	1A	F	3 5/8	21/32	149.0
36.0	36.4	<b>4C360</b>	<b>1120.00</b>	5/32	1A	F	3 5/8	19/32	185.0
44.0	44.4	<b>4C440</b>	<b>1800.00</b>	7/32	2A	J	4 1/2	11/32	225.0
50.0	50.4	<b>4C500</b>	<b>2120.00</b>	7/32	2A	J	4 1/2	11/32	275.0



Tipo 1



Tipo 2



Tipo 1 1

P.D. para correas "C" = O.D.

<sup>1</sup> Montaje inverso únicamente.

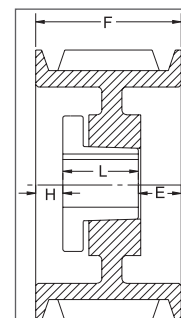
\* Tornillos para montaje suministrados por Maska con esta polea.

POLEAS

## SECCIÓN "C"

### DIMENSIONES 5 RANURAS

Dia. Datum	O.D.	No. de parte	Precio de lista \$	F = 5 3/8 pulgadas					Peso
				H	Tipo	B	L	E	
5.0	5.4	-	-	-	-	-	-	-	-
6.0	6.4	<b>5C60SF</b>	<b>172.00</b>	1/16	1B	SF	2	3 5/16	16
7.0	7.4	<b>5C70</b>	<b>176.00</b>	1 1/8	1B	SF	2	2 1/4	23
7.5	7.9	<b>5C75</b>	<b>224.00</b>	1 1/8	1B	SF	2	2 1/4	25
8.0	8.4	<b>5C80</b>	<b>236.00</b>	1 5/16	1B	E	2 5/8	1 7/16	28
8.5	8.9	<b>5C85</b>	<b>252.00</b>	1 5/16	1B	E	2 5/8	1 7/16	32
9.0	9.4	<b>5C90</b>	<b>256.00</b>	1 5/16	1B	E	2 5/8	1 7/16	36
9.5	9.9	<b>5C95</b>	<b>262.00</b>	1 5/16	1B	E	2 5/8	1 7/16	40
10.0	10.4	<b>5C100</b>	<b>276.00</b>	1 5/16	1W	E	2 5/8	1 7/16	41
10.5	10.9	<b>5C105</b>	<b>296.00</b>	1 5/16	1W	E	2 5/8	1 7/16	44
11.0	11.4	<b>5C110</b>	<b>332.00</b>	1 5/16	1W	E	2 5/8	1 7/16	47
12.0	12.4	<b>5C120</b>	<b>336.00</b>	1 5/16	1W	E	2 5/8	1 7/16	55
13.0	13.4	<b>5C130</b>	<b>376.00</b>	1 5/16	1A	E	2 5/8	1 7/16	55
14.0	14.4	<b>5C140</b>	<b>380.00</b>	1 5/16	1A	E	2 5/8	1 7/16	62
16.0	16.4	<b>5C160</b>	<b>430.00</b>	1 5/16	1A	E	2 5/8	1 7/16	73
18.0	18.4	<b>5C180</b>	<b>480.00</b>	1 5/16	1A	E	2 5/8	1 7/16	83
20.0	20.4	<b>5C200</b>	<b>600.00</b>	3/32	1A	F	3 5/8	1 21/32	109
24.0	24.4	<b>5C240</b>	<b>640.00</b>	3/32	1A	F	3 5/8	1 21/32	129
27.0	27.4	<b>5C270</b>	<b>760.00</b>	3/32	1A	F	3 5/8	1 21/32	149
30.0	30.4	<b>5C300</b>	<b>840.00</b>	3/32	1A	F	3 5/8	1 21/32	172
36.0	36.4	<b>5C360</b>	<b>1180.00</b>	7/32	1A	J	4 1/2	21/32	205
44.0	44.4	<b>5C440</b>	<b>1940.00</b>	7/32	1A	J	4 1/2	21/32	285
50.0	50.4	<b>5C500</b>	<b>2280.00</b>	7/32	1A	J	4 1/2	21/32	325



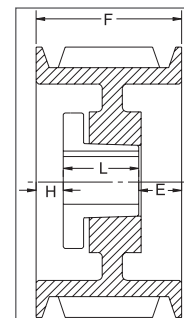
Tipo 1

P.D. para correas "C" = O.D.

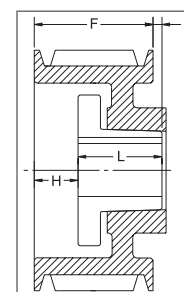
# SECCIÓN "C"

## DIMENSIONES 6 RANURAS

Dia. Datum	O.D.	No. de parte	Precio de lista \$	F = 6 3/8 pulgadas					Peso
				H	Tipo	B	L	E	
5.0	5.4	-	-	-	-	-	-	-	-
6.0	6.4	<b>6C60</b>	<b>244.00</b>	1 1/16	1B	SF	2	3 5/16	24
7.0	7.4	<b>6C70</b>	<b>248.00</b>	1 1/8	1B	SF	2	3 1/4	26
7.5	7.9	<b>6C75</b>	<b>264.00</b>	1 1/8	1B	SF	2	3 1/4	29
8.0	8.4	<b>6C80</b>	<b>280.00</b>	1 5/16	1B	E	2 5/8	2 7/16	31
8.5	8.9	<b>6C85</b>	<b>288.00</b>	1 5/16	1B	E	2 5/8	2 7/16	35
9.0	9.4	<b>6C90</b>	<b>296.00</b>	1 7/32	1B	F	3 5/8	1 17/32	44
9.5	9.9	<b>6C95</b>	<b>316.00</b>	1 7/32	1B	F	3 5/8	1 17/32	49
10.0	10.4	<b>6C100</b>	<b>328.00</b>	1 7/32	1B	F	3 5/8	1 17/32	56
10.5	10.9	<b>6C105</b>	<b>336.00</b>	1 7/32	1B	F	3 5/8	1 17/32	56
11.0	11.4	<b>6C110</b>	<b>356.00</b>	1 7/32	1W	F	3 5/8	1 17/32	59
12.0	12.4	<b>6C120</b>	<b>400.00</b>	1 7/32	1W	F	3 5/8	1 17/32	66
13.0	13.4	<b>6C130</b>	<b>444.00</b>	1 7/32	1A	F	3 5/8	1 17/32	66
14.0	14.4	<b>6C140</b>	<b>480.00</b>	1 7/32	1A	F	3 5/8	1 17/32	75
16.0	16.4	<b>6C160</b>	<b>520.00</b>	1 7/32	1A	F	3 5/8	1 17/32	86
18.0	18.4	<b>6C180</b>	<b>560.00</b>	1 7/32	1A	F	3 5/8	1 17/32	100
20.0	20.4	<b>6C200</b>	<b>620.00</b>	23/32	1A	F	3 5/8	2 1/32	119
24.0	24.4	<b>6C240</b>	<b>720.00</b>	23/32	1A	F	3 5/8	2 1/32	141
27.0	27.4	<b>6C270</b>	<b>880.00</b>	5/32	1A	J	4 1/2	1 23/32	173
30.0	30.4	<b>6C300</b>	<b>1040.00</b>	5/32	1A	J	4 1/2	1 23/32	189
36.0	36.4	<b>6C360</b>	<b>1300.00</b>	7/32	1A	J	4 1/2	1 21/32	240
44.0	44.4	<b>6C440</b>	<b>2040.00</b>	7/32	1A	J	4 1/2	1 21/32	290
50.0	50.4	<b>6C500</b>	<b>2680.00</b>	11/32	2A	M°	6 3/4	23/32	430



Tipo 1



Tipo 2

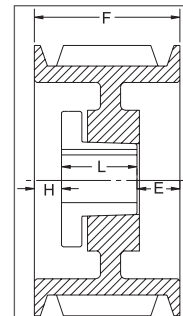
P.D. para correas "C" = O.D.

\*Nota: Los bujes M-N-P-W tienen un montaje estándar solamente con estas partes. Ver página 11 para las instrucciones de instalación.

# SECCIÓN "C"

## DIMENSIONES 8 RANURAS

Dia. Datum	O.D.	No. de parte	Precio de lista \$	F = 8 3/8 pulgadas					Peso
				H	Tipo	B	L	E	
5.0	5.4	-	-	-	-	-	-	-	-
6.0	6.4	-	-	-	-	-	-	-	-
7.0	7.4	<b>8C70</b>	<b>320.00</b>	2 13/32	1B	SF	2	3 31/32	34
7.5	7.9	-	-	-	-	-	-	-	-
8.0	8.4	<b>8C80</b>	<b>390.00</b>	2 3/16	1B	E	2 5/8	3 9/16	38.7
8.5	8.9	<b>8C85</b>	<b>400.00</b>	2 3/16	1B	E	2 5/8	3 9/16	44
9.0	9.4	<b>8C90</b>	<b>410.00</b>	2 3/32	1B	F	3 5/8	2 21/32	52.7
9.5	9.9	<b>8C95</b>	<b>420.00</b>	2 3/32	1B	F	3 5/8	2 21/32	56
10.0	10.4	<b>8C100</b>	<b>430.00</b>	2 3/32	1B	F	3 5/8	2 21/32	62
10.5	10.9	<b>8C105</b>	<b>450.00</b>	2 3/32	1B	F	3 5/8	2 21/32	72
11.0	11.4	<b>8C110</b>	<b>480.00</b>	2 3/32	1B	F	3 5/8	2 21/32	80
12.0	12.4	<b>8C120</b>	<b>520.00</b>	2 3/32	1B	F	3 5/8	2 21/32	94
13.0	13.4	<b>8C130</b>	<b>560.00</b>	2 3/32	1W	F	3 5/8	2 21/32	97
14.0	14.4	<b>8C140</b>	<b>650.00</b>	2 3/32	1A	F	3 5/8	2 21/32	96
16.0	16.4	<b>8C160</b>	<b>740.00</b>	2 3/32	1A	F	3 5/8	2 21/32	111
18.0	18.4	<b>8C180</b>	<b>860.00</b>	2 3/32	1A	F	3 5/8	2 21/32	129
20.0	20.4	<b>8C200</b>	<b>870.00</b>	5/32	1A	J	4 1/2	3 23/32	158
24.0	24.4	<b>8C240</b>	<b>1020.00</b>	5/32	1A	J	4 1/2	3 23/32	173
27.0	27.4	<b>8C270</b>	<b>1120.00</b>	5/32	1A	J	4 1/2	3 23/32	226
30.0	30.4	<b>8C300</b>	<b>1280.00</b>	5/32	1A	J	4 1/2	3 23/32	272
36.0	36.4	<b>8C360</b>	<b>1600.00</b>	9/32	1A	M°	6 3/4	1 11/32	370
44.0	44.4	<b>8C440</b>	<b>2560.00</b>	9/32	1A	M°	6 3/4	1 11/32	479
50.0	50.4	<b>8C500</b>	<b>3000.00</b>	9/32	1A	M°	6 3/4	1 11/32	570



Tipo 1

POLEAS

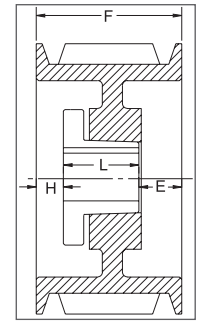
P.D. para correas "C" = O.D.

°Nota: Los bujes M-N-P-W tienen un montaje estándar solamente con estas partes. Ver página 11 para las instrucciones de instalación.

# SECCIÓN "C"

## DIMENSIONES 10 RANURAS

Dia. Datum	O.D.	No. de parte	Precio de lista \$	F = 10 3/8 pulgadas					
				H	Tipo	B	L	E	Peso
8.0	8.4	<b>10C80</b>	<b>460.00</b>	2 3/16	1B	E	2 5/8	5 9/16	46.3
8.5	8.9	<b>10C85</b>	<b>480.00</b>	2 3/16	1B	E	2 5/8	5 9/16	52
9.0	9.4	<b>10C90</b>	<b>500.00</b>	2 5/32	1B	J	4 1/2	3 23/32	54
9.5	9.9	<b>10C95</b>	<b>510.00</b>	2 5/32	1B	J	4 1/2	3 23/32	67.4
10.0	10.4	<b>10C100</b>	<b>520.00</b>	2 5/32	1B	J	4 1/2	3 23/32	77
10.5	10.9	<b>10C105</b>	<b>580.00</b>	2 5/32	1B	J	4 1/2	3 23/32	85.7
11.0	11.4	<b>10C110</b>	<b>600.00</b>	2 5/32	1B	J	4 1/2	3 23/32	93.5
12.0	12.4	<b>10C120</b>	<b>760.00</b>	2 5/32	1B	J	4 1/2	3 23/32	111.8
13.0	13.4	<b>10C130</b>	<b>840.00</b>	2 5/32	1W	J	4 1/2	3 23/32	105
14.0	14.4	<b>10C140</b>	<b>900.00</b>	2 5/32	1W	J	4 1/2	3 23/32	114
16.0	16.4	<b>10C160</b>	<b>960.00</b>	2 5/32	1A	J	4 1/2	3 23/32	140
18.0	18.4	<b>10C180</b>	<b>1080.00</b>	2 5/32	1A	J	4 1/2	3 23/32	160
20.0	20.4	<b>10C200</b>	<b>1120.00</b>	2 5/32	1A	J	4 1/2	3 23/32	165
24.0	24.4	<b>10C240</b>	<b>1360.00</b>	9/32	1A	M°	6 3/4	3 11/32	225
30.0	30.4	<b>10C300</b>	<b>1760.00</b>	9/32	1A	M°	6 3/4	3 11/32	275
36.0	36.4	<b>10C360</b>	<b>2560.00</b>	9/32	1A	M°	6 3/4	3 11/32	340
44.0	44.4	<b>10C440</b>	<b>2800.00</b>	9/32	1A	M°	6 3/4	3 11/32	460
50.0	50.4	<b>10C500</b>	<b>3500.00</b>	9/32	1A	M°	6 3/4	3 11/32	550



Tipo 1

## DIMENSIONES 12 RANURAS

Dia. Datum	O.D.	No. de parte	Precio de lista \$	F = 12 3/8 pulgadas					
				H	Tipo	B	L	E	Peso
9.0	9.4	<b>12C90</b>	<b>700.00</b>	2 21/32	1B	J	4 1/2	5 7/32	68
9.5	9.9	<b>12C95</b>	<b>720.00</b>	2 21/32	1B	J	4 1/2	5 7/32	75
10.0	10.4	<b>12C100</b>	<b>740.00</b>	2 21/32	1B	J	4 1/2	5 7/32	86
10.5	10.9	<b>12C105</b>	<b>760.00</b>	2 21/32	1B	J	4 1/2	5 7/32	96
11.0	11.4	<b>12C110</b>	<b>780.00</b>	2 21/32	1B	J	4 1/2	5 7/32	104
12.0	12.4	<b>12C120</b>	<b>800.00</b>	2 21/32	1B	J	4 1/2	5 7/32	118.7
13.0	13.4	<b>12C130</b>	<b>920.00</b>	2 21/32	1W	J	4 1/2	5 7/32	138
14.0	14.4	<b>12C140</b>	<b>1180.00</b>	2 21/32	1W	J	4 1/2	5 7/32	153
16.0	16.4	<b>12C160</b>	<b>1360.00</b>	2 21/32	1A	J	4 1/2	5 7/32	175
18.0	18.4	<b>12C180</b>	<b>1400.00</b>	2 21/32	1A	J	4 1/2	5 7/32	198
20.0	20.4	<b>12C200</b>	<b>1480.00</b>	9/32	1A	M°	6 3/4	5 11/32	237
24.0	24.4	<b>12C240</b>	<b>1520.00</b>	9/32	1A	M°	6 3/4	5 11/32	277
30.0	30.4	<b>12C300</b>	<b>1780.00</b>	9/32	1A	M°	6 3/4	5 11/32	357
36.0	36.4	<b>12C360</b>	<b>2640.00</b>	9/32	1A	M°	6 3/4	5 11/32	430
44.0	44.4	<b>12C440</b>	<b>3200.00</b>	9/32	1A	M°	6 3/4	5 11/32	520
50.0	50.4	<b>12C500</b>	<b>3900.00</b>	9/32	1A	M°	6 3/4	5 11/32	595

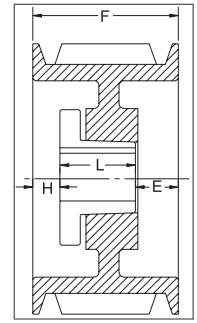
P.D. para correas "C" = O.D.

°Nota: Los bujes M-N-P-W tienen un montaje estándar solamente con estas partes. Ver página 11 para las instrucciones de instalación.

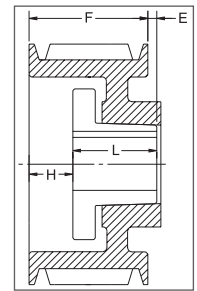
## SECCIÓN "D"

### DIMENSIONES 3 RANURAS

Dia. Datum	O.D.	No. de parte	Precio de lista \$	F = 4 5/8 pulgadas					Peso
				H	Tipo	B	L	E	
12.0	12.6	<b>3D120</b>	<b>560.00</b>	9/32	1W	F	3 5/8	23/32	64
13.0	13.6	<b>3D130</b>	<b>600.00</b>	9/32	1W	F	3 5/8	23/32	72
13.5	14.1	<b>3D135</b>	<b>620.00</b>	9/32	1W	F	3 5/8	23/32	76
14.0	14.6	<b>3D140</b>	<b>640.00</b>	9/32	1W	F	3 5/8	23/32	79
14.5	15.1	<b>3D145</b>	<b>680.00</b>	9/32	1W	F	3 5/8	23/32	84
15.0	15.6	<b>3D150</b>	<b>720.00</b>	9/32	1W	F	3 5/8	23/32	89
15.5	16.1	<b>3D155</b>	<b>740.00</b>	9/32	1W	F	3 5/8	23/32	94
16.0	16.6	<b>3D160</b>	<b>760.00</b>	9/32	1A	F	3 5/8	23/32	95
17.0	17.6	-	-	-	-	-	-	-	-
18.0	18.6	<b>3D180</b>	<b>800.00</b>	7/32	6A	J	4 1/2	11/32	115
20.0	20.6	-	-	-	-	-	-	-	-
22.0	22.6	<b>3D220</b>	<b>960.00</b>	7/32	6A	J	4 1/2	11/32	135
27.0	27.6	<b>3D270</b>	<b>1160.00</b>	7/32	6A	J	4 1/2	11/32	170
33.0	33.6	<b>3D330</b>	<b>1640.00</b>	7/32	6A	J	4 1/2	11/32	215
40.0	40.6	<b>3D400</b>	<b>2040.00</b>	7/32	6A	J	4 1/2	11/32	275



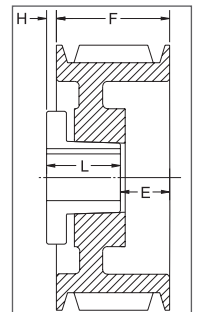
Tipo 1



Tipo 2

### DIMENSIONES 4 RANURAS

Dia. Datum	O.D.	No. de parte	Precio de lista \$	F = 6 1/16 pulgadas					Peso
				H	Tipo	B	L	E	
12.0	12.6	<b>4D120</b>	<b>600.00</b>	1 3/32	1W	F	3 5/8	1 11/32	77
13.0	13.6	<b>4D130</b>	<b>640.00</b>	1 3/32	1W	F	3 5/8	1 11/32	85
13.5	14.1	<b>4D135</b>	<b>660.00</b>	1 3/32	1W	F	3 5/8	1 11/32	90
14.0	14.6	<b>4D140</b>	<b>680.00</b>	1 3/32	1W	F	3 5/8	1 11/32	95
14.5	15.1	<b>4D145</b>	<b>780.00</b>	1 3/32	1W	F	3 5/8	1 11/32	100
15.0	15.6	<b>4D150</b>	<b>800.00</b>	1 3/32	1W	F	3 5/8	1 11/32	107
15.5	16.1	<b>4D155</b>	<b>820.00</b>	1 3/32	1W	F	3 5/8	1 11/32	112
16.0	16.6	<b>4D160</b>	<b>840.00</b>	1 3/32	1A	F	3 5/8	1 11/32	110
17.0	17.6	<b>4D170</b>	<b>940.00</b>	1 5/32	1A	J	4 1/2	13/32	127
18.0	18.6	<b>4D180</b>	<b>960.00</b>	1 5/32	1A	J	4 1/2	13/32	131
20.0	20.6	<b>4D200</b>	<b>980.00</b>	1 5/32	1A	J	4 1/2	13/32	145
22.0	22.6	<b>4D220</b>	<b>1000.00</b>	5/32	1A	J	4 1/2	1 13/32	160
27.0	27.6	<b>4D270</b>	<b>1280.00</b>	5/32	1A	J	4 1/2	1 13/32	200
33.0	33.6	<b>4D330</b>	<b>2120.00</b>	9/32	2A	Mº	6 3/4	31/32	285
40.0	40.6	<b>4D400</b>	<b>2240.00</b>	9/32	2A	Mº	6 3/4	31/32	375



Tipo 6

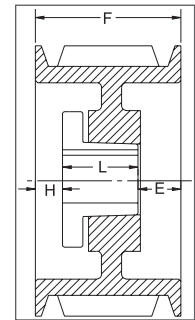
P.D. para correas "D" = O.D.

\*Nota: Los bujes M-N-P-W tienen un montaje estándar solamente con estas partes. Ver página 11 para las instrucciones de instalación.

# SECCIÓN "D"

## DIMENSIONES 5 RANURAS

Dia. Datum	O.D.	No. de parte	Precio de lista \$	F = 7 1/2 pulgadas					Peso
				H	Tipo	B	L	E	
12.0	12.6	<b>5D120</b>	<b>780.00</b>	1 27/32	1W	F	3 5/8	2 1/32	89
13.0	13.6	<b>5D130</b>	<b>800.00</b>	1 27/32	1W	F	3 5/8	2 1/32	100
13.5	14.1	<b>5D135</b>	<b>820.00</b>	1 27/32	1W	F	3 5/8	2 1/32	105
14.0	14.6	<b>5D140</b>	<b>860.00</b>	1 27/32	1W	F	3 5/8	2 1/32	111
14.5	15.1	<b>5D145</b>	<b>920.00</b>	1 27/32	1W	F	3 5/8	2 1/32	118
15.0	15.6	<b>5D150</b>	<b>940.00</b>	1 27/32	1W	F	3 5/8	2 1/32	125
15.5	16.1	<b>5D155</b>	<b>960.00</b>	1 27/32	1W	F	3 5/8	2 1/32	131
16.0	16.6	<b>5D160</b>	<b>980.00</b>	1 27/32	1A	F	3 5/8	2 1/32	110
17.0	17.6	<b>5D170</b>	<b>1000.00</b>	1 29/32	1A	J	4 1/2	1 3/32	148
18.0	18.6	<b>5D180</b>	<b>1020.00</b>	1 29/32	1A	J	4 1/2	1 3/32	131
20.0	20.6	<b>5D200</b>	<b>1220.00</b>	5/32	1A	J	4 1/2	2 27/32	148
22.0	22.6	<b>5D220</b>	<b>1420.00</b>	5/32	1A	J	4 1/2	2 27/32	152
27.0	27.6	<b>5D270</b>	<b>1740.00</b>	9/32	1A	M°	6 3/4	15/32	250
33.0	33.6	<b>5D330</b>	<b>2180.00</b>	9/32	1A	M°	6 3/4	15/32	321
40.0	40.6	<b>5D400</b>	<b>2700.00</b>	9/32	1A	M°	6 3/4	15/32	424
48.0	48.6	<b>5D480</b>	<b>3080.00</b>	9/32	1A	M°	6 3/4	15/32	550
58.0	58.6	<b>5D580</b>	<b>4280.00</b>	9/32	1A	M°	6 3/4	15/32	600



Tipo 1

## DIMENSIONES 6 RANURAS

Dia. Datum	O.D.	No. de parte	Precio de lista \$	F = 8 15/16 pulgadas					Peso
				H	Tipo	B	L	E	
12.0	12.6	<b>6D120</b>	<b>960.00</b>	1 29/32	1B	J	4 1/2	2 17/32	116
13.0	13.6	<b>6D130</b>	<b>980.00</b>	1 29/32	1B	J	4 1/2	2 17/32	137
13.5	14.1	<b>6D135</b>	<b>1000.00</b>	1 29/32	1B	J	4 1/2	2 17/32	147
14.0	14.6	<b>6D140</b>	<b>1020.00</b>	1 29/32	1B	J	4 1/2	2 17/32	158
14.5	15.1	<b>6D145</b>	<b>1040.00</b>	1 29/32	1B	J	4 1/2	2 17/32	170
15.0	15.6	<b>6D150</b>	<b>1060.00</b>	1 29/32	1W	J	4 1/2	2 17/32	147
15.5	16.1	<b>6D155</b>	<b>1080.00</b>	1 29/32	1W	J	4 1/2	2 17/32	153
16.0	16.6	<b>6D160</b>	<b>1100.00</b>	1 29/32	1A	J	4 1/2	2 17/32	137
17.0	17.6	<b>6D170</b>	<b>1120.00</b>	1 29/32	1A	J	4 1/2	2 17/32	175
18.0	18.6	<b>6D180</b>	<b>1140.00</b>	1 29/32	1A	J	4 1/2	2 17/32	159
20.0	20.6	<b>6D200</b>	<b>1480.00</b>	1 29/32	1A	J	4 1/2	2 17/32	185
22.0	22.6	<b>6D220</b>	<b>1840.00</b>	9/32	1A	M°	6 3/4	1 29/32	225
27.0	27.6	<b>6D270</b>	<b>1900.00</b>	9/32	1A	M°	6 3/4	1 29/32	300
33.0	33.6	<b>6D330</b>	<b>2460.00</b>	9/32	1A	M°	6 3/4	1 29/32	350
40.0	40.6	<b>6D400</b>	<b>2980.00</b>	9/32	1A	M°	6 3/4	1 29/32	460
48.0	48.6	<b>6D480</b>	<b>3480.00</b>	9/32	1A	M°	6 3/4	1 29/32	600
58.0	58.6	<b>6D580</b>	<b>4520.00</b>	3/16	1A	N°	8 1/8	5/8	760

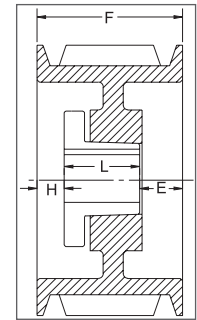
P.D. para correas "D" = O.D.

°Nota: Los bujes M-N-P-W tienen un montaje estándar solamente con estas partes. Ver página 11 para las instrucciones de instalación.

# SECCIÓN "D"

## DIMENSIONES 8 RANURAS

Dia. Datum	O.D.	No. de parte	Precio de lista \$	F = 11 13/16 pulgadas					Peso
				H	Tipo	B	L	E	
12.0	12.6	<b>8D120</b>	<b>1240.00</b>	2 5/32	1B	J	4 1/2	5 5/32	141
13.0	13.6	<b>8D130</b>	<b>1260.00</b>	2 5/32	1B	J	4 1/2	5 5/32	163
13.5	14.1	<b>8D135</b>	<b>1280.00</b>	2 5/32	1B	J	4 1/2	5 5/32	175
14.0	14.6	<b>8D140</b>	<b>1320.00</b>	2 5/32	1B	J	4 1/2	5 5/32	187
14.5	15.1	<b>8D145</b>	<b>1360.00</b>	2 5/32	1B	J	4 1/2	5 5/32	200
15.0	15.6	<b>8D150</b>	<b>1380.00</b>	2 5/32	1W	J	4 1/2	5 5/32	183
15.5	16.1	<b>8D155</b>	<b>1400.00</b>	2 5/32	1W	J	4 1/2	5 5/32	189
16.0	16.6	<b>8D160</b>	<b>1560.00</b>	2 5/32	1W	J	4 1/2	5 5/32	197
17.0	17.6	<b>8D170</b>	<b>1680.00</b>	2 5/32	1W	J	4 1/2	5 5/32	213
18.0	18.6	<b>8D180</b>	<b>1820.00</b>	2 9/32	1W	M°	6 3/4	2 25/32	255
20.0	20.6	<b>8D200</b>	<b>2000.00</b>	2 9/32	1A	M°	6 3/4	2 25/32	258
22.0	22.6	<b>8D220</b>	<b>2160.00</b>	9/32	1A	M°	6 3/4	4 25/32	266
27.0	27.6	<b>8D270</b>	<b>2660.00</b>	9/32	1A	M°	6 3/4	4 25/32	320
33.0	33.6	<b>8D330</b>	<b>2840.00</b>	9/32	1A	M°	6 3/4	4 25/32	420
40.0	40.6	<b>8D400</b>	<b>3720.00</b>	1/8	1A	N°	8 1/8	3 9/16	600
48.0	48.6	<b>8D480</b>	<b>4320.00</b>	1/8	1A	N°	8 1/8	3 9/16	750
58.0	58.6	<b>8D580</b>	<b>5280.00</b>	1/8	1A	N°	8 1/8	3 9/16	1000



Tipo 1

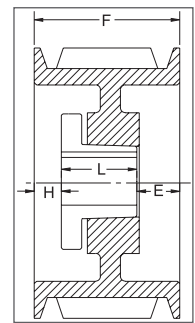
P.D. para correas "D" = O.D.

°Nota: Los bujes M-N-P-W tienen un montaje estándar solamente con estas partes. Ver página 11 para las instrucciones de instalación.

# SECCIÓN "D"

## DIMENSIONES 10 RANURAS

Dia. Datum	O.D.	No. de parte	Precio de lista \$	F = 14 11/16 pulgadas					
				H	Tipo	B	L	E	Peso
12.0	12.6	<b>10D120</b>	<b>1520.00</b>	2 9/32	1B	Mº	6 3/4	5 21/32	166
13.0	13.6	<b>10D130</b>	<b>1580.00</b>	2 9/32	1B	Mº	6 3/4	5 21/32	207
13.5	14.1	<b>10D135</b>	<b>1660.00</b>	2 9/32	1B	Mº	6 3/4	5 21/32	224
14.0	14.6	<b>10D140</b>	<b>1740.00</b>	2 9/32	1B	Mº	6 3/4	5 21/32	242
14.5	15.1	<b>10D145</b>	<b>1840.00</b>	2 9/32	1B	Mº	6 3/4	5 21/32	260
15.0	15.6	<b>10D150</b>	<b>1860.00</b>	2 9/32	1B	Mº	6 3/4	5 21/32	279
15.5	16.1	<b>10D155</b>	<b>1880.00</b>	2 9/32	1B	Mº	6 3/4	5 21/32	298
16.0	16.6	<b>10D160</b>	<b>1900.00</b>	2 9/32	1B	Mº	6 3/4	5 21/32	318
17.0	17.6	<b>10D170</b>	<b>2080.00</b>	2 9/32	1W	Mº	6 3/4	5 21/32	307
18.0	18.6	<b>10D180</b>	<b>2120.00</b>	2 9/32	1W	Mº	6 3/4	5 21/32	293
20.0	20.6	<b>10D200</b>	<b>2380.00</b>	2 9/32	1W	Mº	6 3/4	5 21/32	351
22.0	22.6	<b>10D220</b>	<b>2480.00</b>	1 9/32	1A	Mº	6 3/4	6 21/32	342
27.0	27.6	<b>10D270</b>	<b>2980.00</b>	1 9/32	1A	Mº	6 3/4	6 21/32	415
33.0	33.6	<b>10D330</b>	<b>3280.00</b>	1 11/32	1A	Nº	8 1/8	5 7/32	575
40.0	40.6	<b>10D400</b>	<b>4300.00</b>	1 11/32	1A	Nº	8 1/8	5 7/32	680
48.0	48.6	<b>10D480</b>	<b>5080.00</b>	3/16	1A	Pº	9 3/8	5 1/8	975
58.0	58.6	<b>10D580</b>	<b>5880.00</b>	3/16	1A	Pº	9 3/8	5 1/8	1250



Tipo 1

## DIMENSIONES 12 RANURAS

Dia. Datum	O.D.	No. de parte	Precio de lista \$	F = 17 9/16 pulgadas					
				H	Tipo	B	L	E	Peso
12.0	12.6	<b>12D120</b>	<b>1720.00</b>	3 9/32	1B	Mº	6 3/4	7 17/32	187
13.0	13.6	<b>12D130</b>	<b>1800.00</b>	3 9/32	1B	Mº	6 3/4	7 17/32	234
13.5	14.1	<b>12D135</b>	<b>1860.00</b>	3 9/32	1B	Mº	6 3/4	7 17/32	252
14.0	14.6	<b>12D140</b>	<b>1880.00</b>	3 9/32	1B	Mº	6 3/4	7 17/32	271
14.5	15.1	<b>12D145</b>	<b>2000.00</b>	3 9/32	1B	Mº	6 3/4	7 17/32	290
15.0	15.6	<b>12D150</b>	<b>2120.00</b>	3 9/32	1B	Mº	6 3/4	7 17/32	310
15.5	16.1	<b>12D155</b>	<b>2180.00</b>	3 9/32	1B	Mº	6 3/4	7 17/32	330
16.0	16.6	<b>12D160</b>	<b>2200.00</b>	3 9/32	1B	Mº	6 3/4	7 17/32	352
17.0	17.6	<b>12D170</b>	<b>2320.00</b>	3 15/32	1W	Mº	6 3/4	7 11/32	365
18.0	18.6	<b>12D180</b>	<b>2420.00</b>	3 15/32	1W	Mº	6 3/4	7 11/32	391
20.0	20.6	<b>12D200</b>	<b>2760.00</b>	3 9/32	1W	Mº	6 3/4	7 17/32	401
22.0	22.6	<b>12D220</b>	<b>2980.00</b>	2 9/32	1A	Mº	6 3/4	7 17/32	365
27.0	27.6	<b>12D270</b>	<b>3640.00</b>	2 1/8	1A	Nº	8 1/8	7 5/16	505
33.0	33.6	<b>12D330</b>	<b>4380.00</b>	2 1/8	1A	Nº	8 1/8	7 5/16	590
40.0	40.6	<b>12D400</b>	<b>5040.00</b>	3/16	1A	Pº	9 3/8	8	925
48.0	48.6	<b>12D480</b>	<b>6180.00</b>	3/16	1A	Pº	9 3/8	8	1150
58.0	58.6	<b>12D580</b>	<b>6760.00</b>	3/16	1A	Pº	9 3/8	8	1500

P.D. para correas "D" = O.D.

°Nota: Los bujes M-N-P-W tienen un montaje estándar solamente con estas partes. Ver página 11 para las instrucciones de instalación.